

This map was prepared for assessment purposes

NE1/4 SW1/4 SEC 8 T2N R33E WM
UMATILLA COUNTY
SCALE 1"=100'

10/26/06

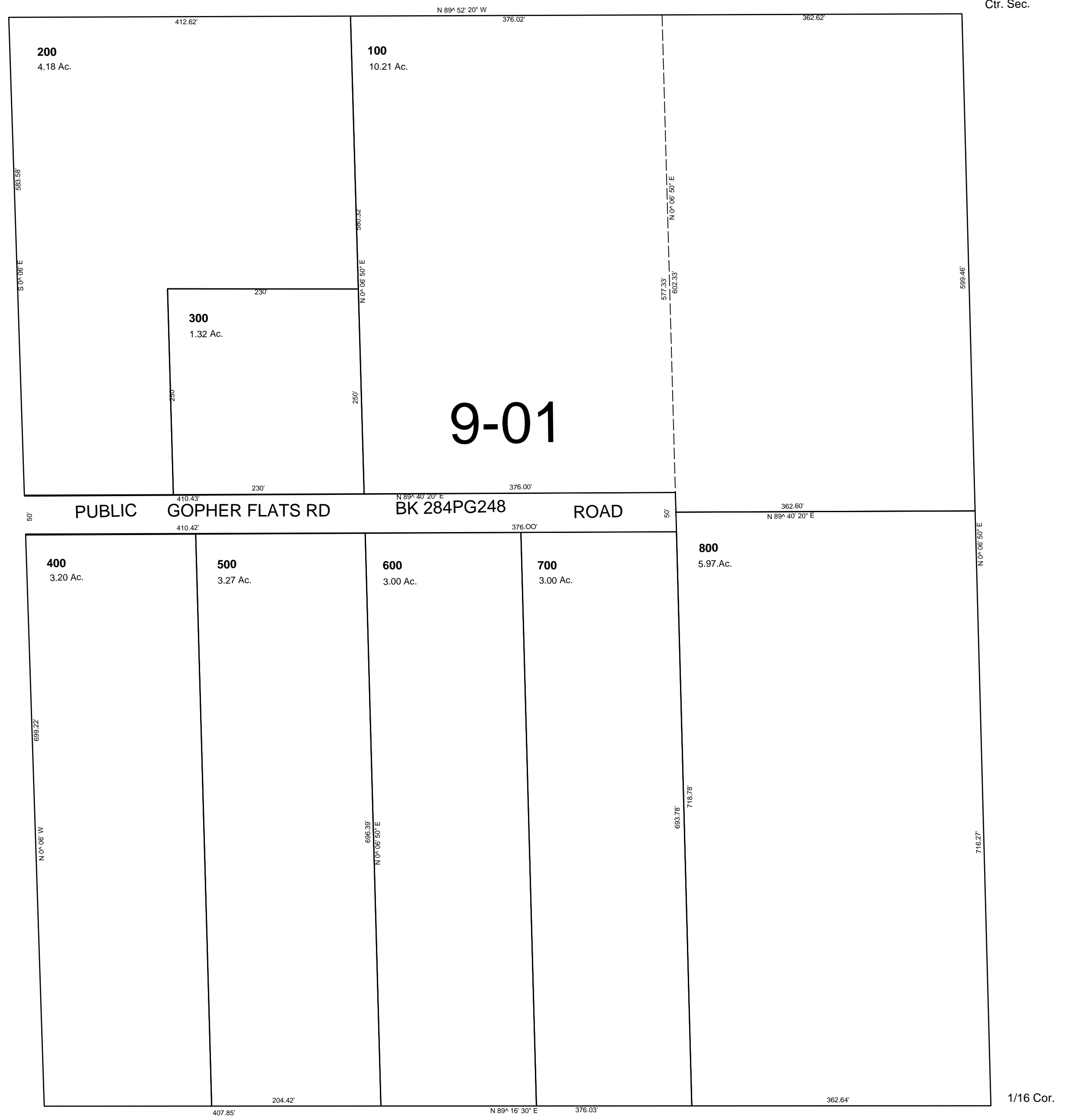
2N 33 08CA
AERIAL PHOTO NO 4P-100
RESERVATION

See Map 2N 33 08

Ctr. Sec.

See Map 2N 33 08CB

See Map 2N 33 08



See Map 2N 33 08

2N 33 08CA

1/16 Cor.