

This map was prepared for Assessment & Taxation purposes only and has not been prepared for legal, engineering or surveying purposes.

NW 1/4 SEC 6 T2N R33E WM UMATILLA COUNTY

SCALE 1"=200'

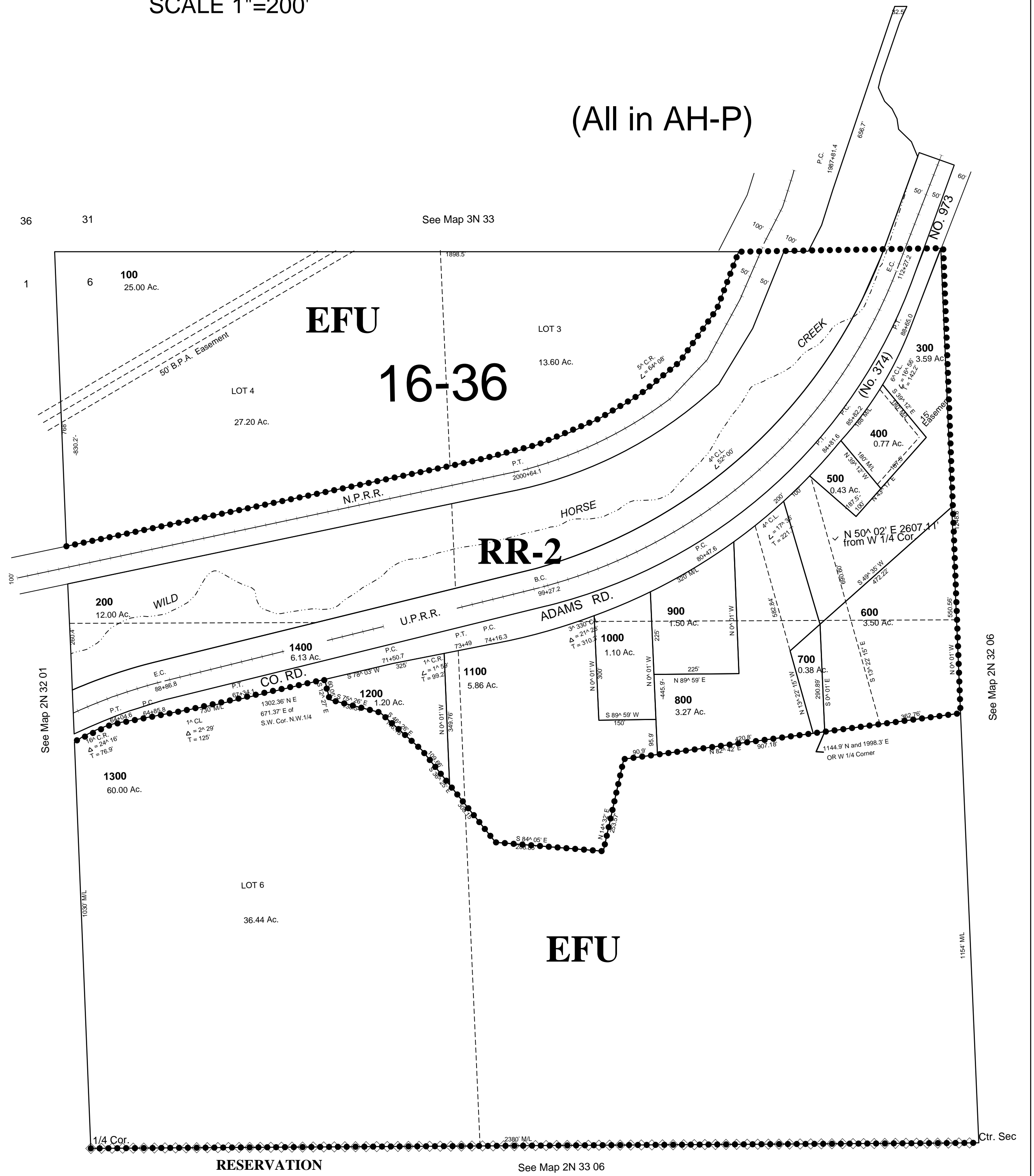
4/03/08

2N 33 06B

AERIAL PHOTO NO 4P-101

See FIRM for areas subject to flooding

(All in AH-P)



2N 33 06B