

This map was prepared for assessment purposes

SE1/4 NW1/4 SEC 21 T2N R32E WM
UMATILLA COUNTY

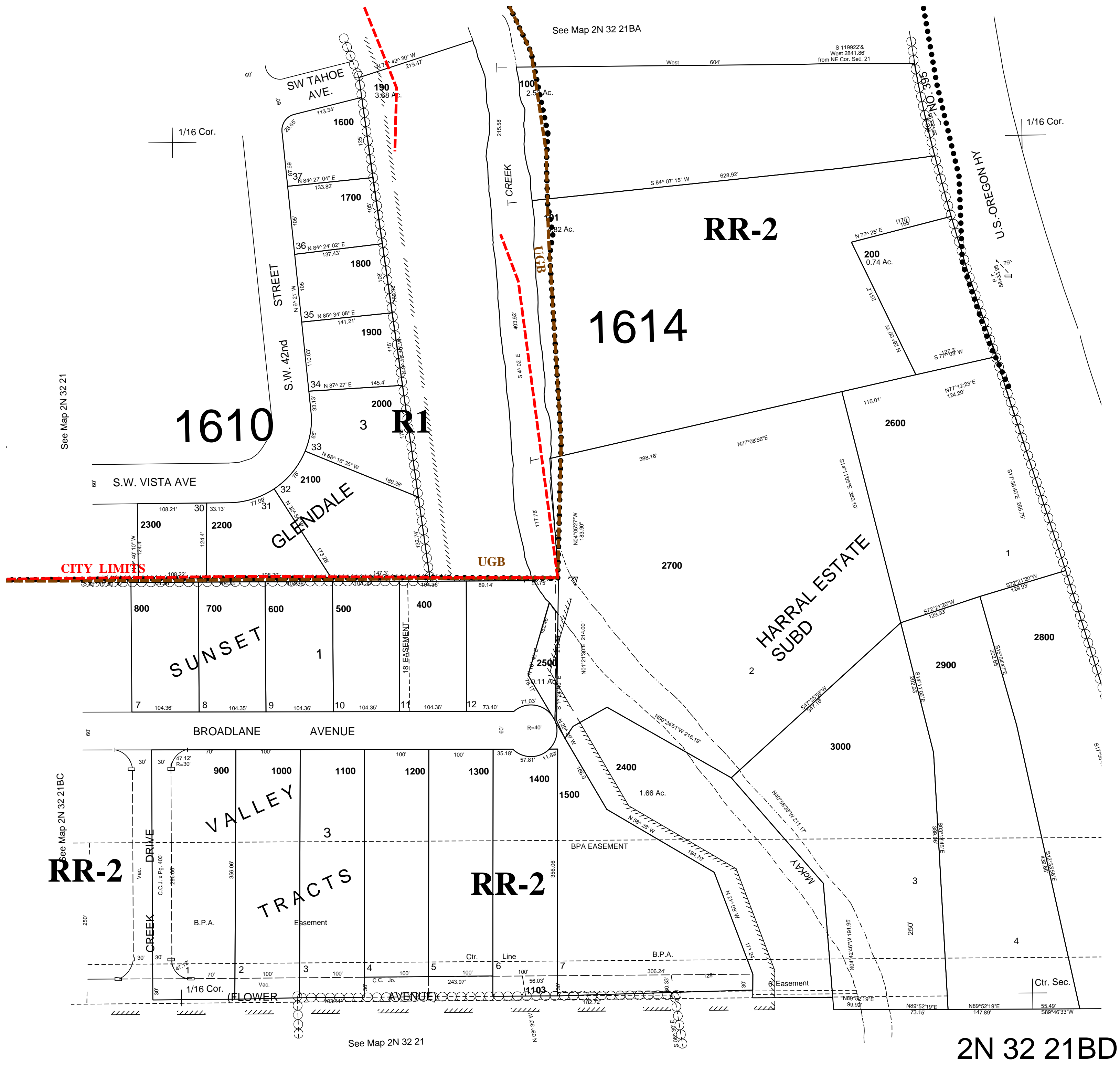
07/03/2019

2N 32 21BD

AERIAL PHOTO NO. 4P-59

See FEMA FIRM for areas subject to flooding

SCALE 1"=100'



See Map 2N 32 21

See Map 2N 32 21BA

See Map 2N 32 21BC

See Map 2N 32 21

2N 32 21BD