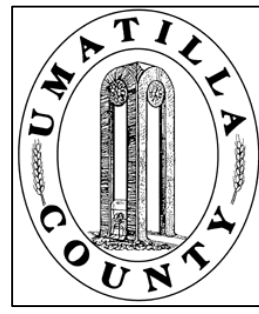


This map was prepared for Assessment & Taxation purposes only and was not prepared nor is it suitable for legal, engineering or surveying purposes.



# SW1/4 NW1/4 SEC 16 T2N R32 WM UMATILLA COUNTY, OR

REVISED: 6-18-08

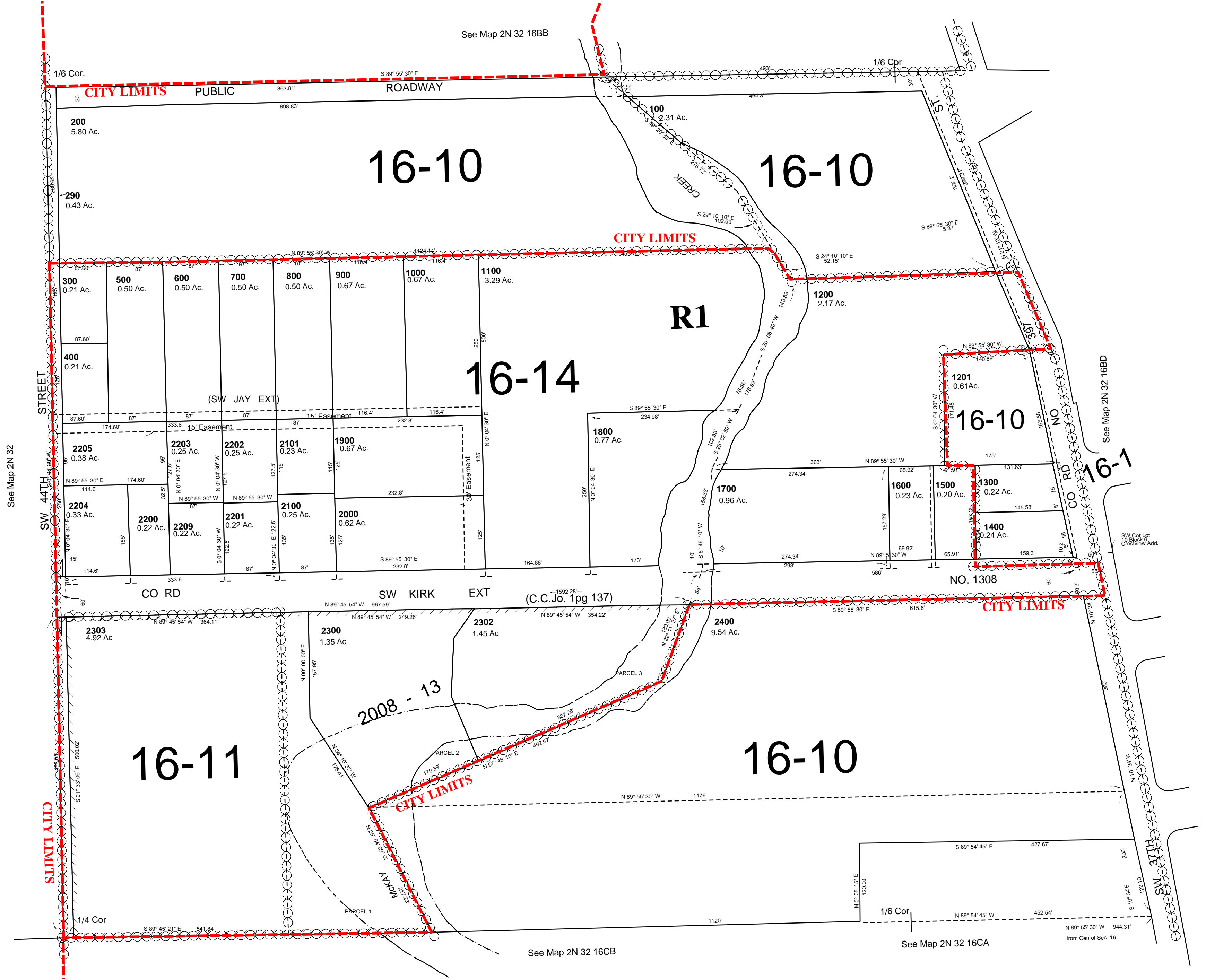
## 2N3216BC

Aerial Photo No. 4P-59

City of Pendleton & UGA

SCALE: 1" = 100'

See FIRM for areas subject to flooding



## 2N3216BC