

This map was prepared for Assessment and Taxation purposes only and has NOT been prepared for legal, engineering or surveying purposes.

NW1/4 NW1/4 SEC 16 T2N R32E WM UMATILLA COUNTY

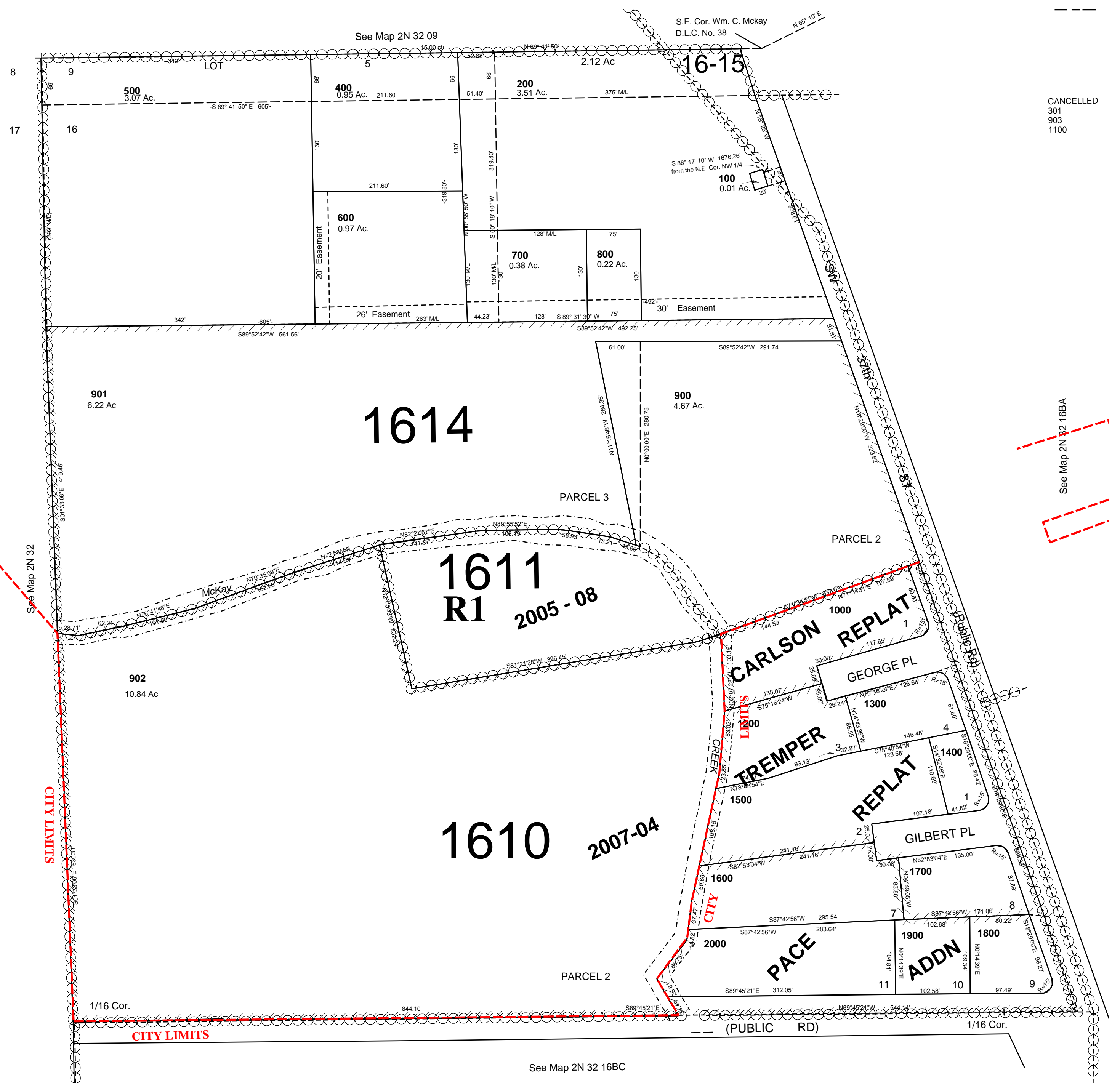
6/4/07

2N 32 16BB Pendleton City & UGB

1"=100'

See FIRM for areas subject to flooding

P/O AH-P Overlay Zone



CANCELLED
301
903
1100

See Map 2N 32 16BA

2N 32 16BB