

This map was prepared for Assessment & Taxation purposes only and was NOT prepared nor is it suitable for legal, engineering or surveying purposes.

SW1/4 NE1/4 SEC 16 T2NR32E WM UMATILLA COUNTY

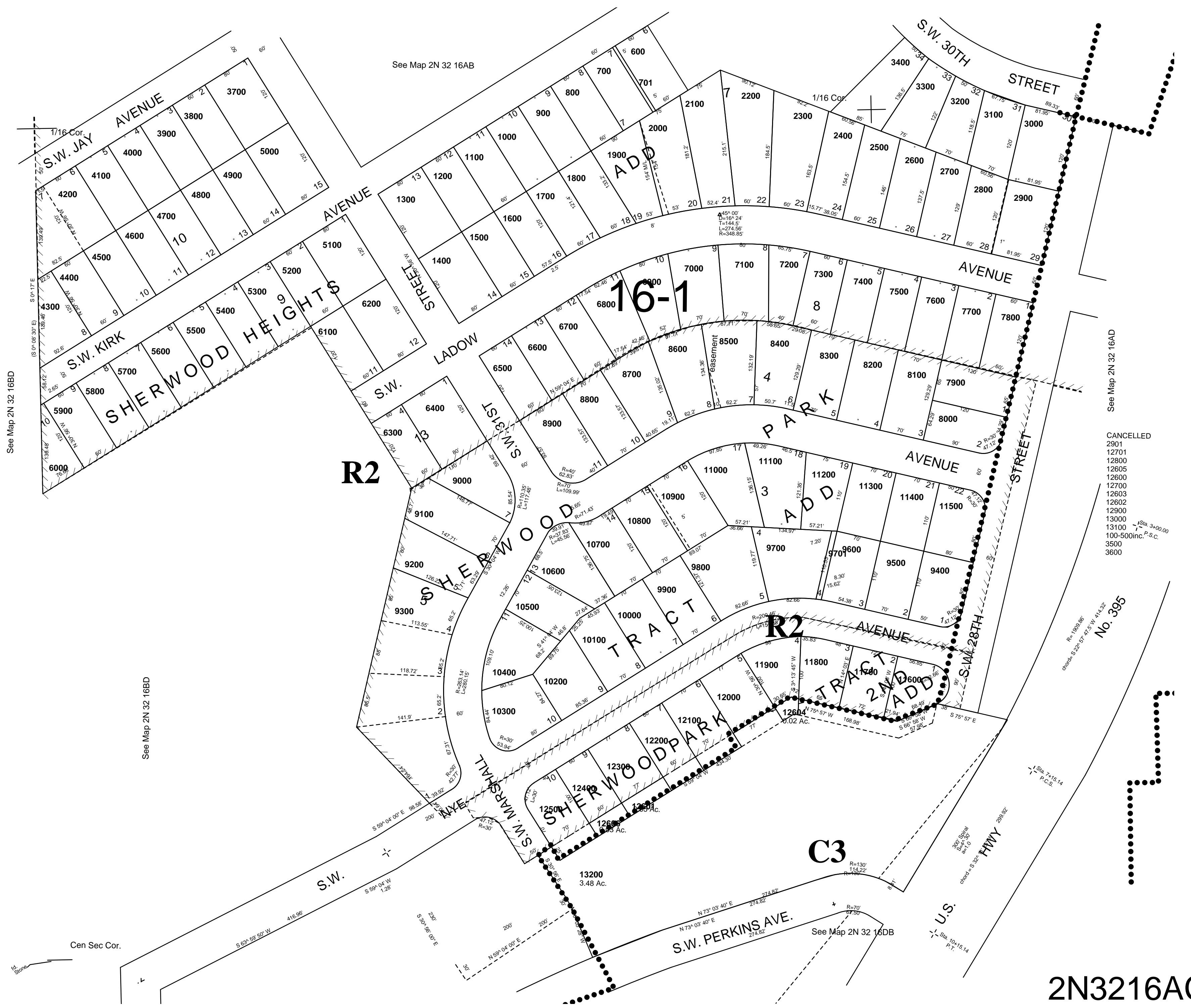
2N3216AC

AERIAL PHOTO NO 4P-59

CITY OF PENDLETON

06/23/05

SCALE 1"=100'



See Map 2N 32 16AD

CANCELLED
2901
12701
12800
12505
12600
12700
12603
12602
12900
13000
13100
100-500inc. P.C.
3500
3600

2N3216AC