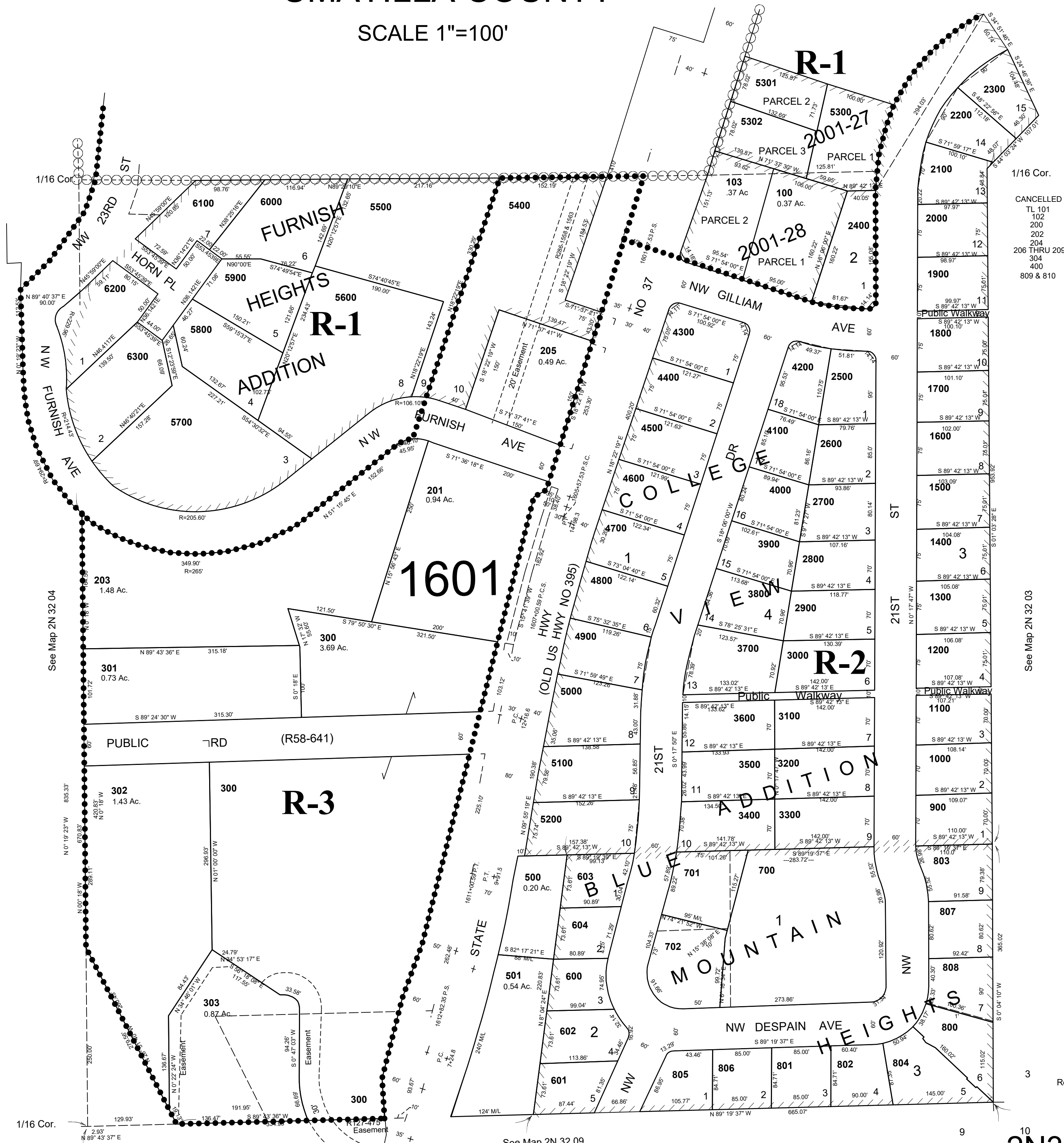


This map was prepared for Assessment & Taxation purposes only and was NOT prepared nor is it suitable for legal, engineering or surveying purposes.

SE1/4 SE1/4 SEC 4 T2N R32E WM UMATILLA COUNTY

2N 32 04DD
AERIAL PHOTO NO. NZ 4P-104
CITY OF PENDLETON

SCALE 1"=100'



CANCELLED
TL 101
102
200
202
204
206 THRU 209
304
400
809 & 810

See Map 2N 32 04

See Map 2N 32 03

See Map 2N 32 09

Revised: 04/01/2020

2N3204DD