

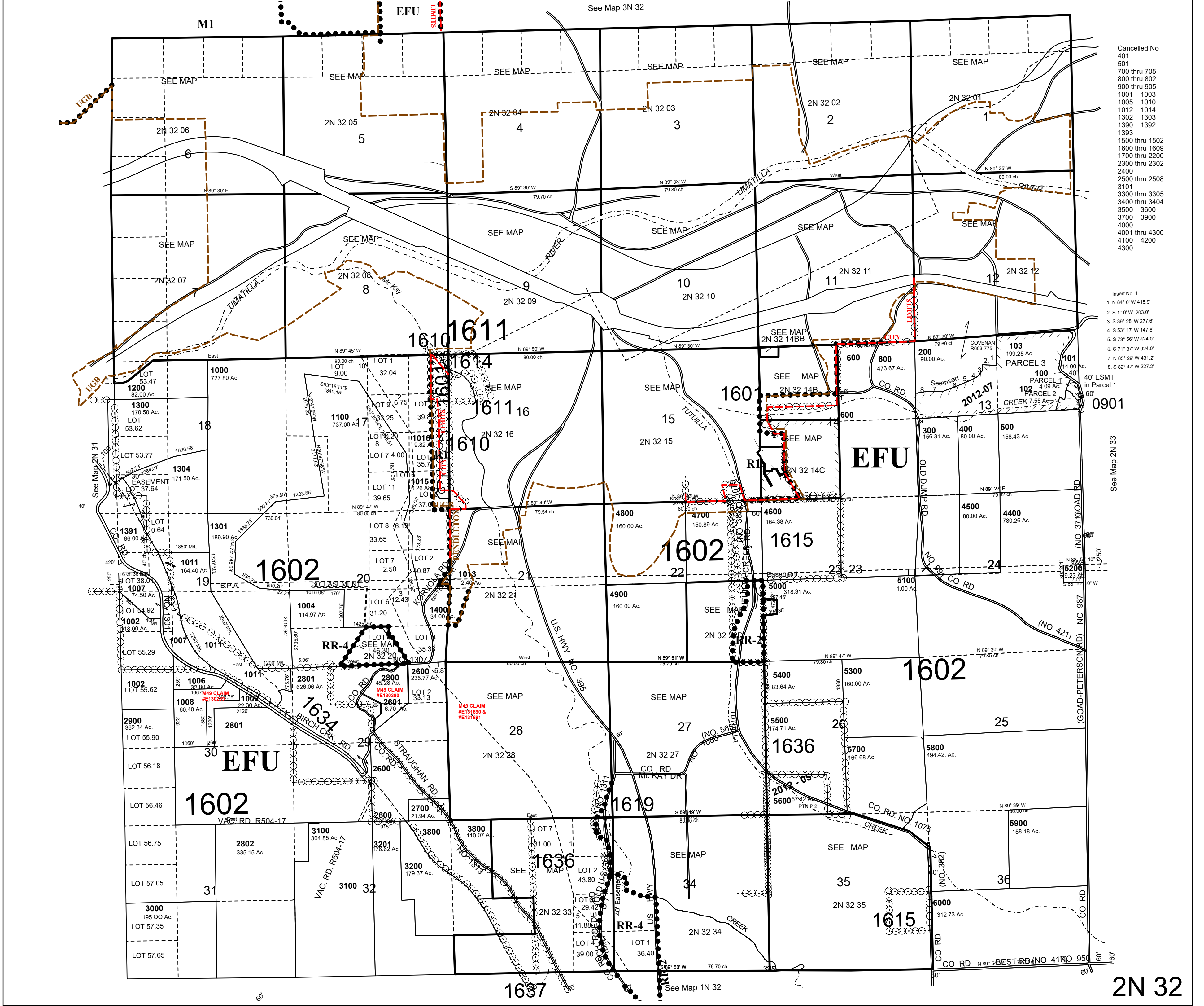
This map was prepared for assessment purposes

SCALE 1"=2000"

T2N R32E WM UMATILLA COUNTY

3/05/21

2N 32 & INDEX



Cancelled No.
401
501
700 thru 705
800 thru 802
900 thru 905
1001 1003
1005 1010
1012 1014
1302 1303
1390 1392
1393
1500 thru 1502
1600 thru 1609
1700 thru 2200
2300 thru 2302
2400
2500 thru 2508
3101
3300 thru 3305
3400 thru 3404
3500 3600
3700 3900
4000
4001 thru 4300
4100 4200
4300

Insert No. 1
1. N 84° 0' W 415.7'
2. S 1° 0' W 203.0'
3. S 39° 28' W 277.6'
4. S 53° 17' W 147.8'
5. S 73° 58' W 424.0'
6. S 71° 37' W 924.0'
7. N 85° 29' W 431.2'
8. S 82° 47' W 227.2'

See Map 2N 33

2N 32