

This map was prepared for assessment purposes

# NW 1/4 T2N R30E WM UMATILLA COUNTY

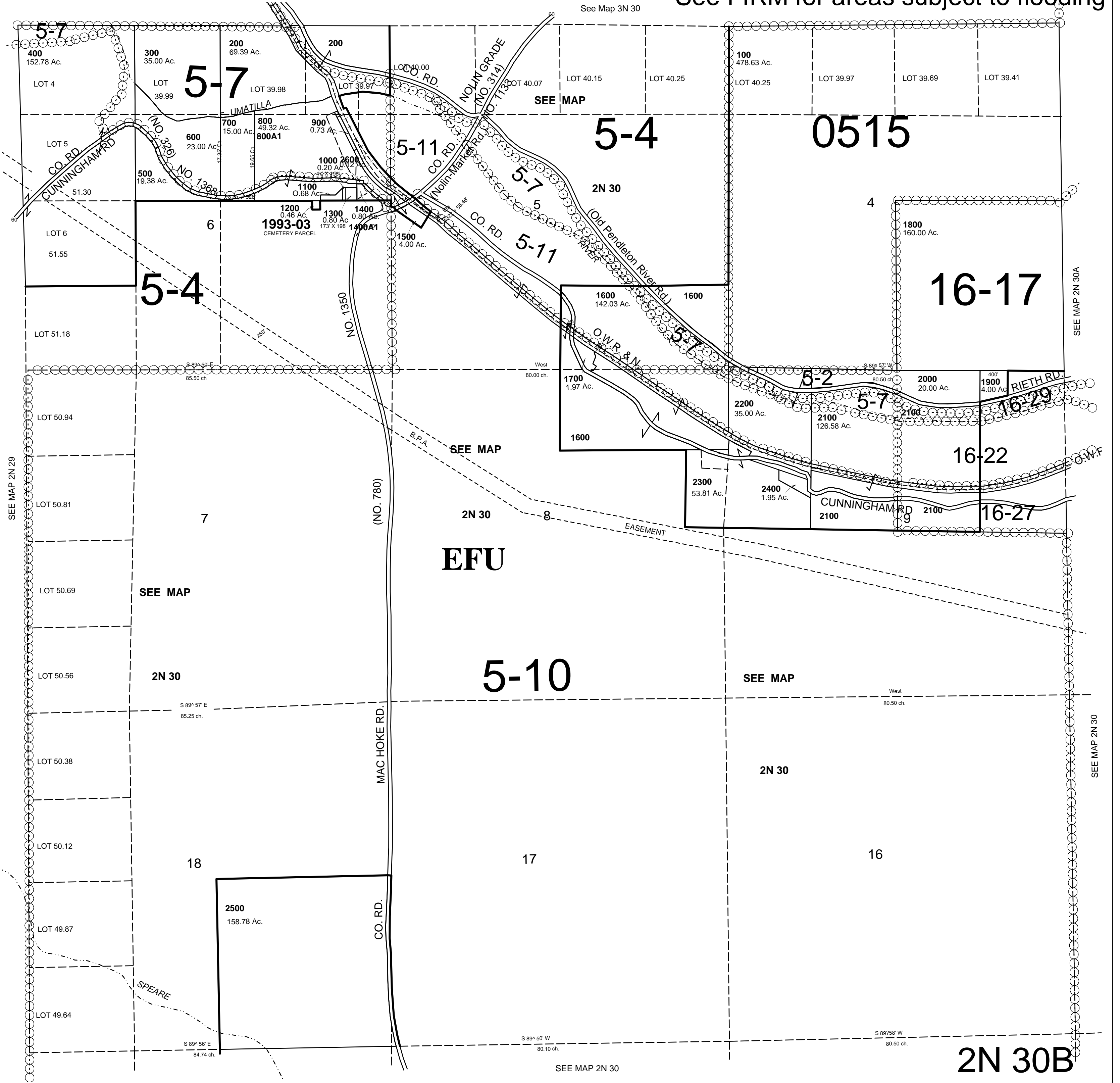
2N 30B

AERIAL PHOTO NO. 2P 179-185, 3P 17-22 & 38-44

1" = 1000'

See FIRM for areas subject to flooding

See Map 3N 30



SEE MAP 2N 30

2N 30B