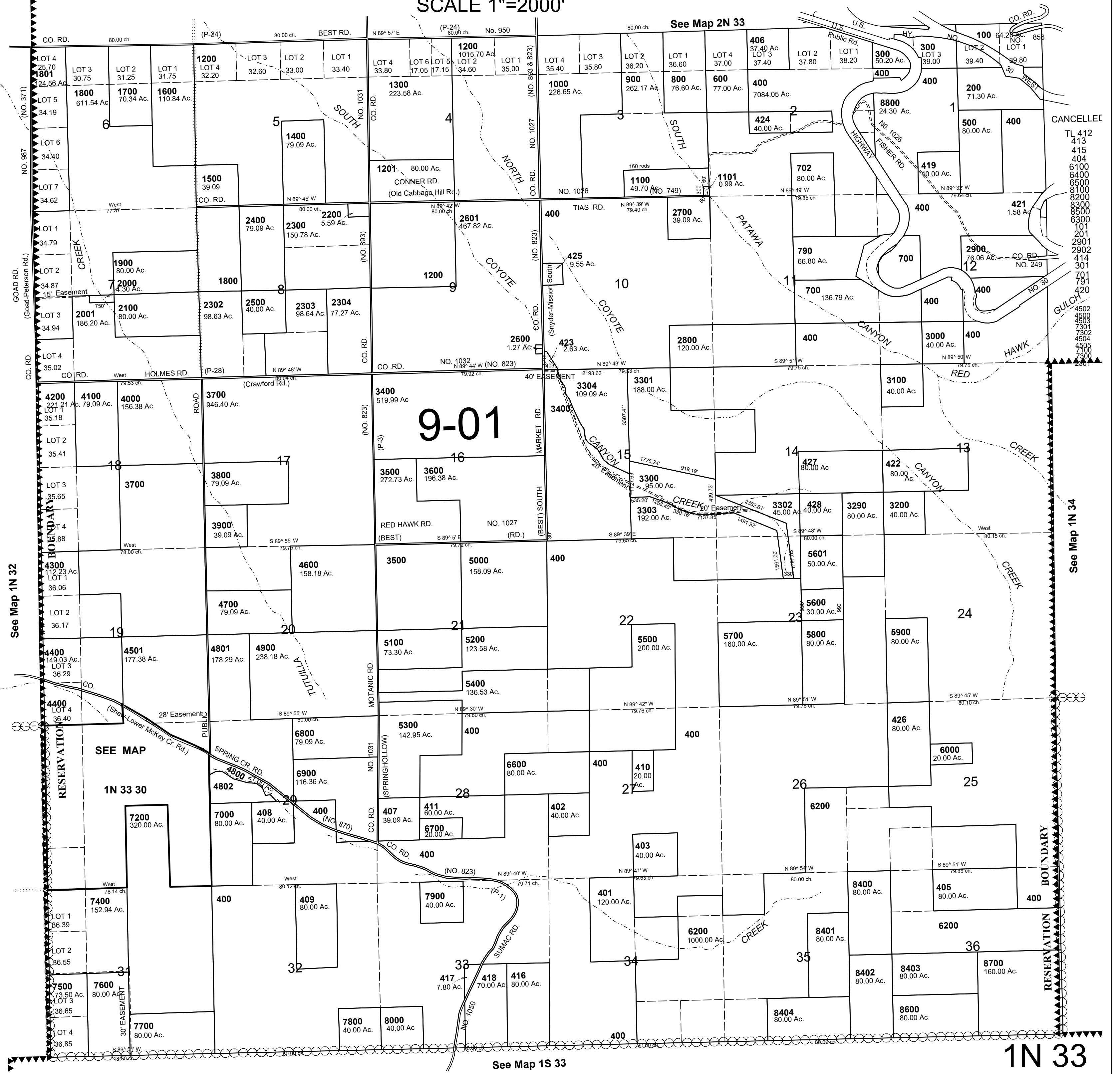


This map was prepared for Assessment & Taxation purposes only and has not been prepared for legal, engineering or surveying purposes.

# T1N R33E WM UMATILLA COUNTY SCALE 1"=2000'

REVISED: 05/21/21

1N 33  
AERIAL PHOTO NO NZ 4P 8-12, 3P 175-180 &  
3P 139-144  
RESERVATION



9-01

1N 33