

This map was prepared for Assessment & Taxation purposes only and was NOT prepared nor is it suitable for legal, engineering or surveying purposes.

Cancelled Tax Lots

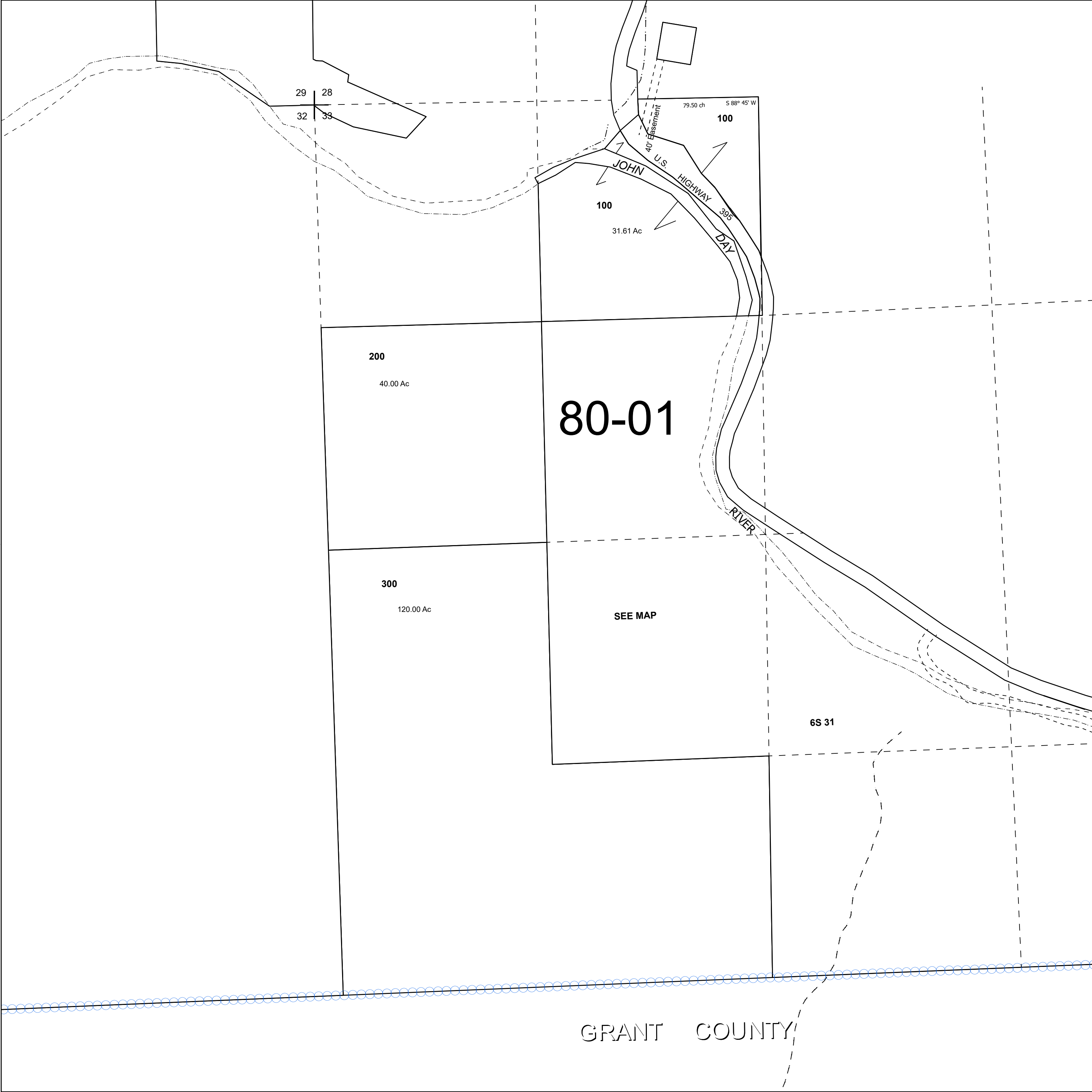
SEC 33 T6S R31E WM

UMATILLA COUNTY

SCALE 1" =400'

6S 31 33

See Map 6S 31



See Map 6S 31

See Map 6S 31