

This map was prepared for Assessment & Taxation purposes only and was NOT prepared nor is it suitable for legal, engineering or surveying purposes.

Cancelled Tax Lots

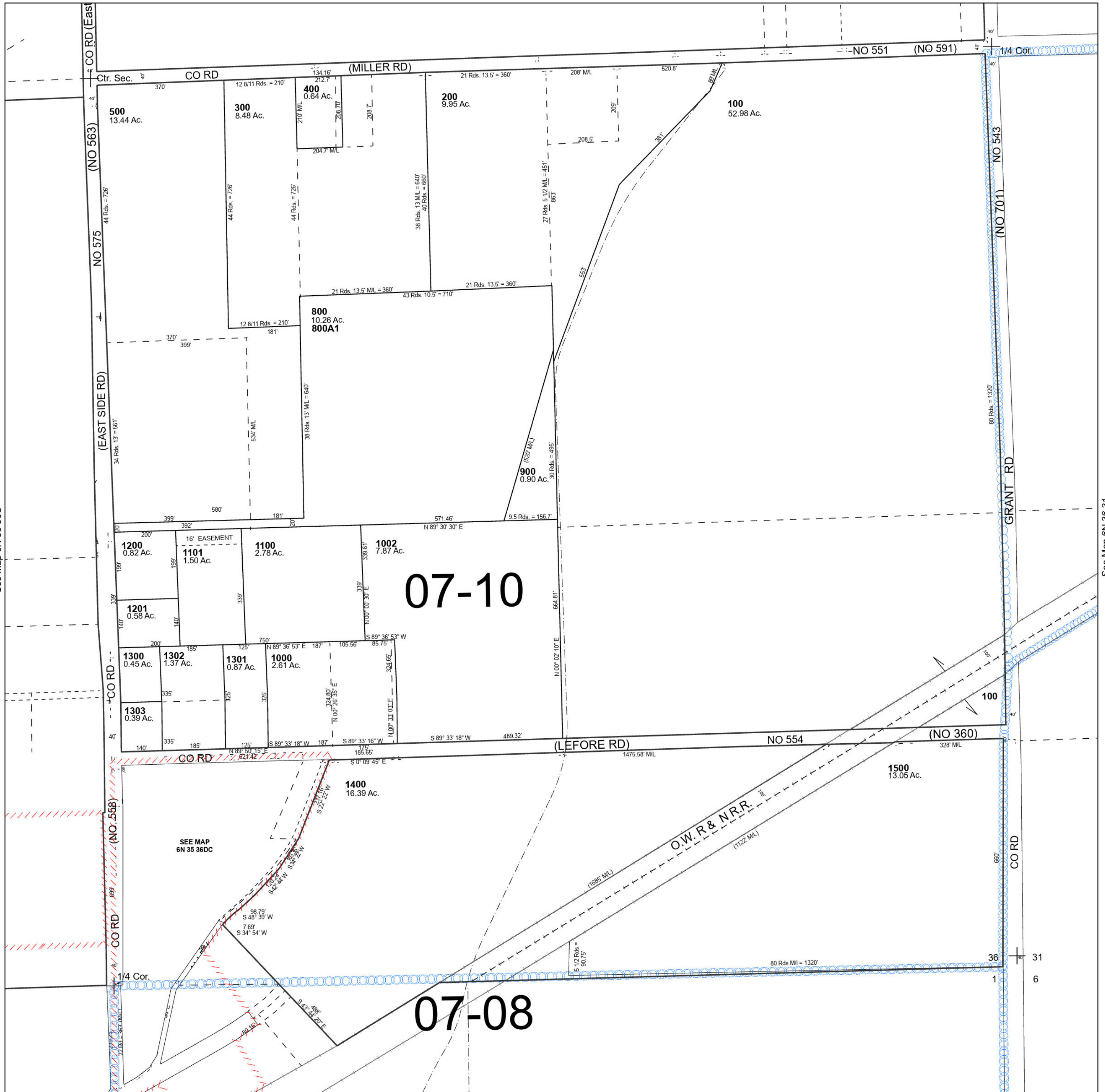
- 301
- 600
- 700
- 1001
- 1304

SE 1/4 SEC 36 T6N R35E WM UMATILLA COUNTY

6N 35 36D

SCALE 1" = 200'

See Map 6N 35 36A



See Map 6N 35 36C

See Map 6N 35 36A

Revised 10/25/2023

See Map 5N 35 01

6N 35 36D