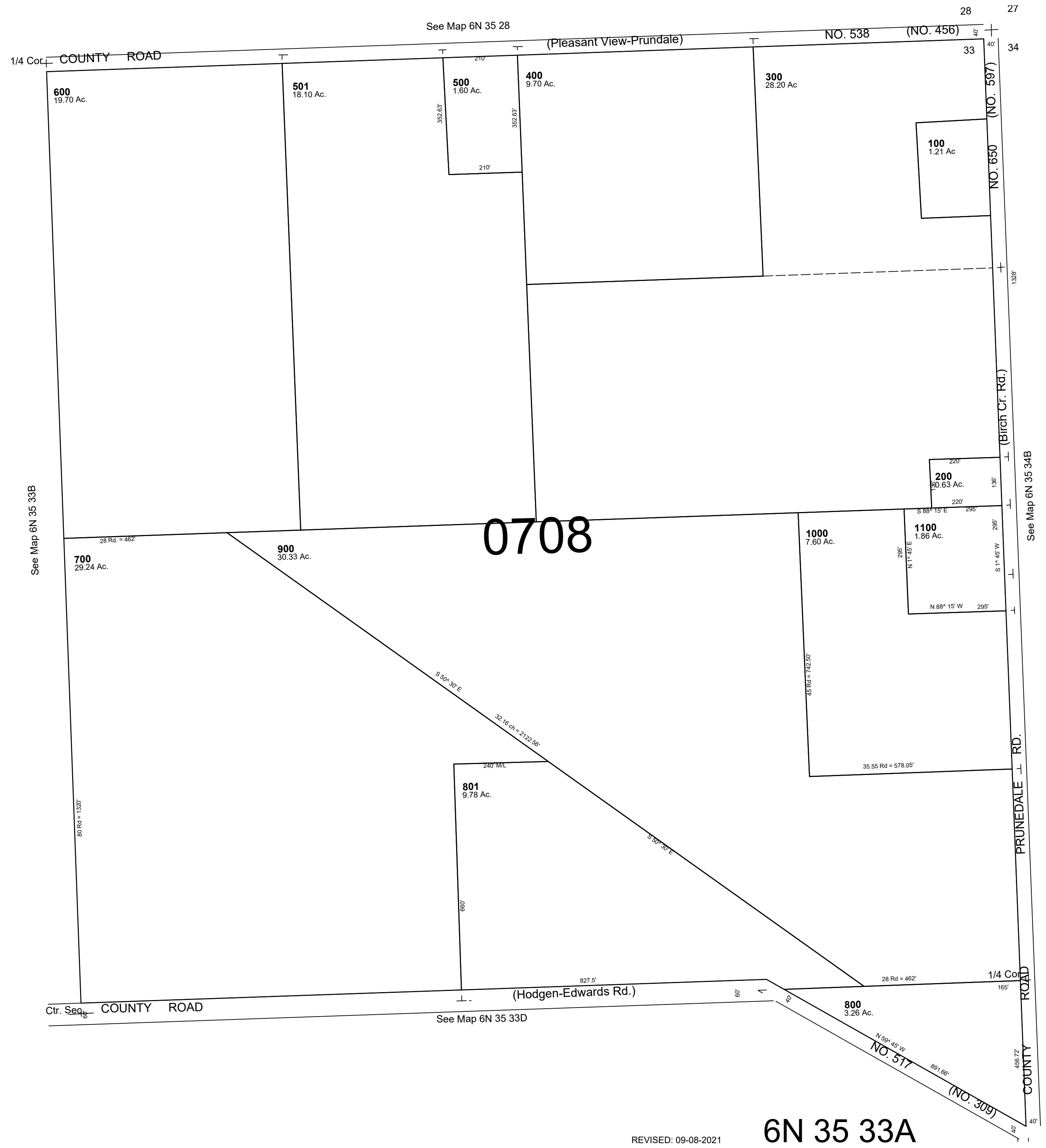


This map was prepared for Assessment & Taxation purposes only and was NOT prepared nor is it suitable for legal, engineering or surveying purposes.

NE 1/4 SEC 33 T6N R35E WM  
UMATILLA COUNTY  
SCALE 1"=200'

6N 35 33A  
AERIAL PHOTO NO. 6P-61



6N 35 33A