

This map was prepared for Assessment & Taxation purposes only and was NOT prepared nor is it suitable for legal, engineering or surveying purposes.

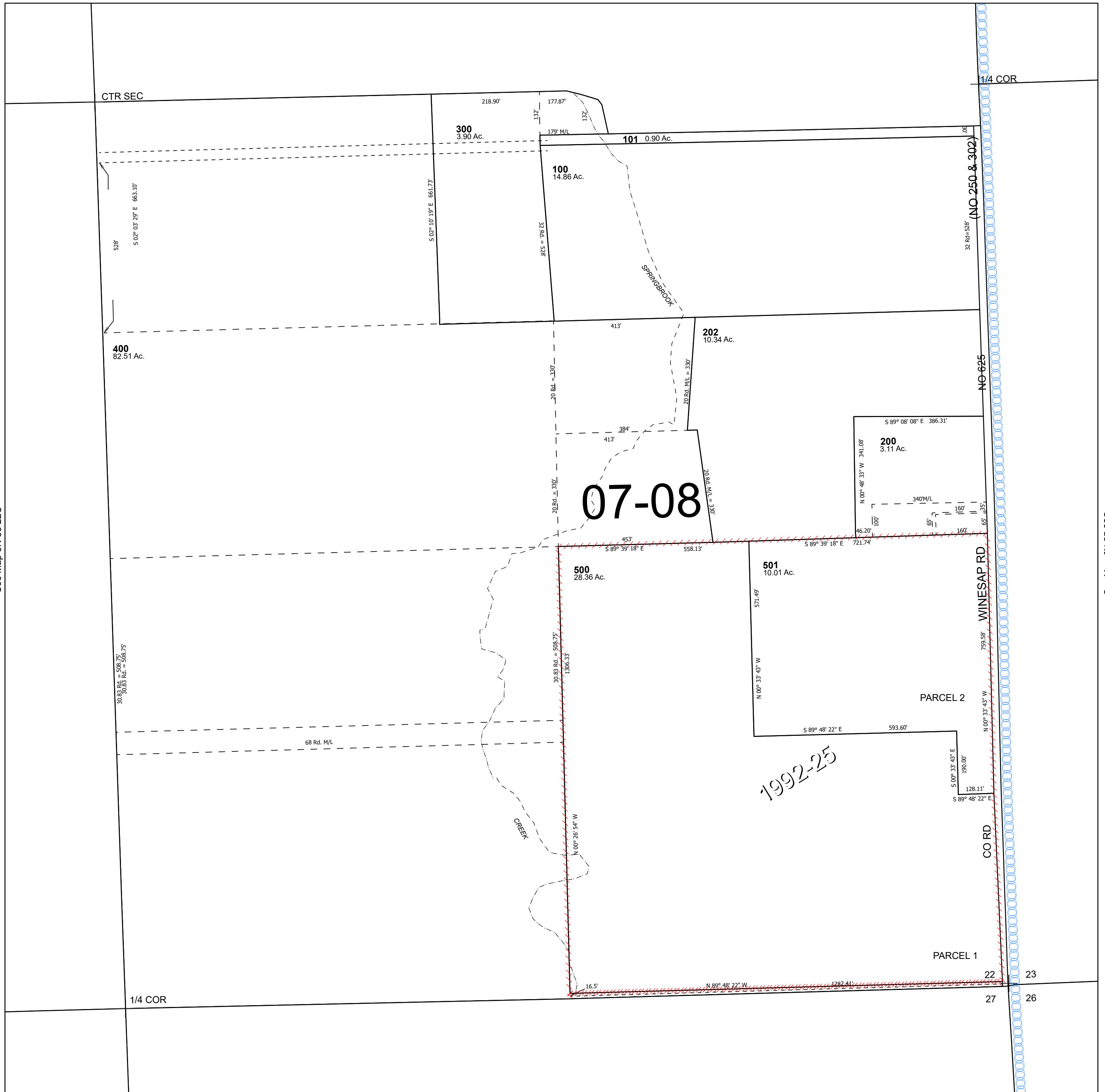
Cancelled Tax Lots  
201

# SE 1/4 SEC 22 T6N R35E WM UMATILLA COUNTY

## 6N 35 22D

SCALE 1" = 200'

See Map 6N 35 22A



See Map 6N 35 22C

See Map 6N 35 23C

## 6N 35 22D