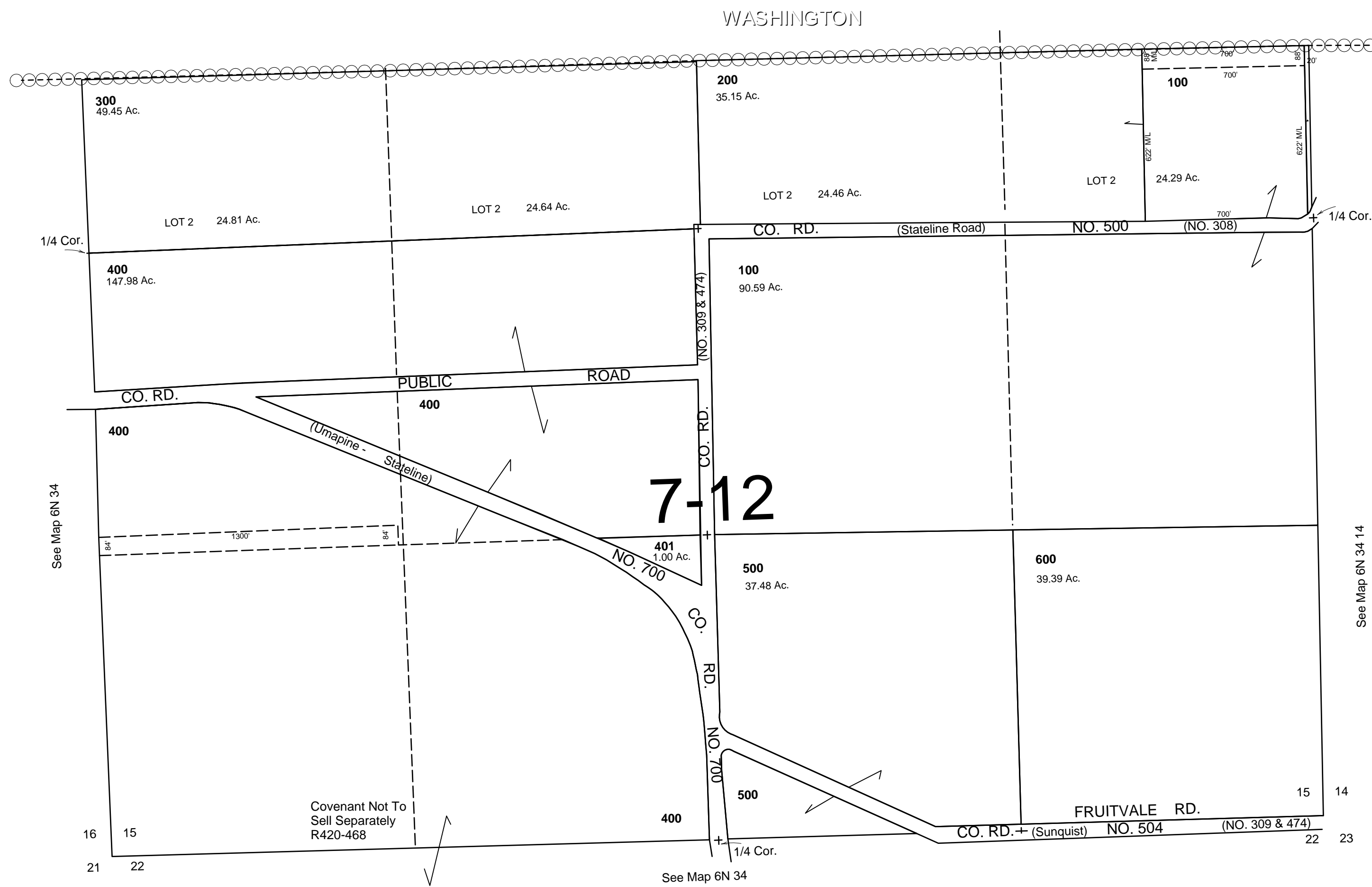


This map was prepared for Assessment & Taxation purposes only and was NOT prepared nor is it suitable for legal, engineering or surveying purposes.

# SEC 15 T6N R34E WM UMATILLA COUNTY

6N 34 15  
Aerial Photo No. NZ-6P-24

SCALE 1"=400'



Revised: 3/24/11

6N 34 15