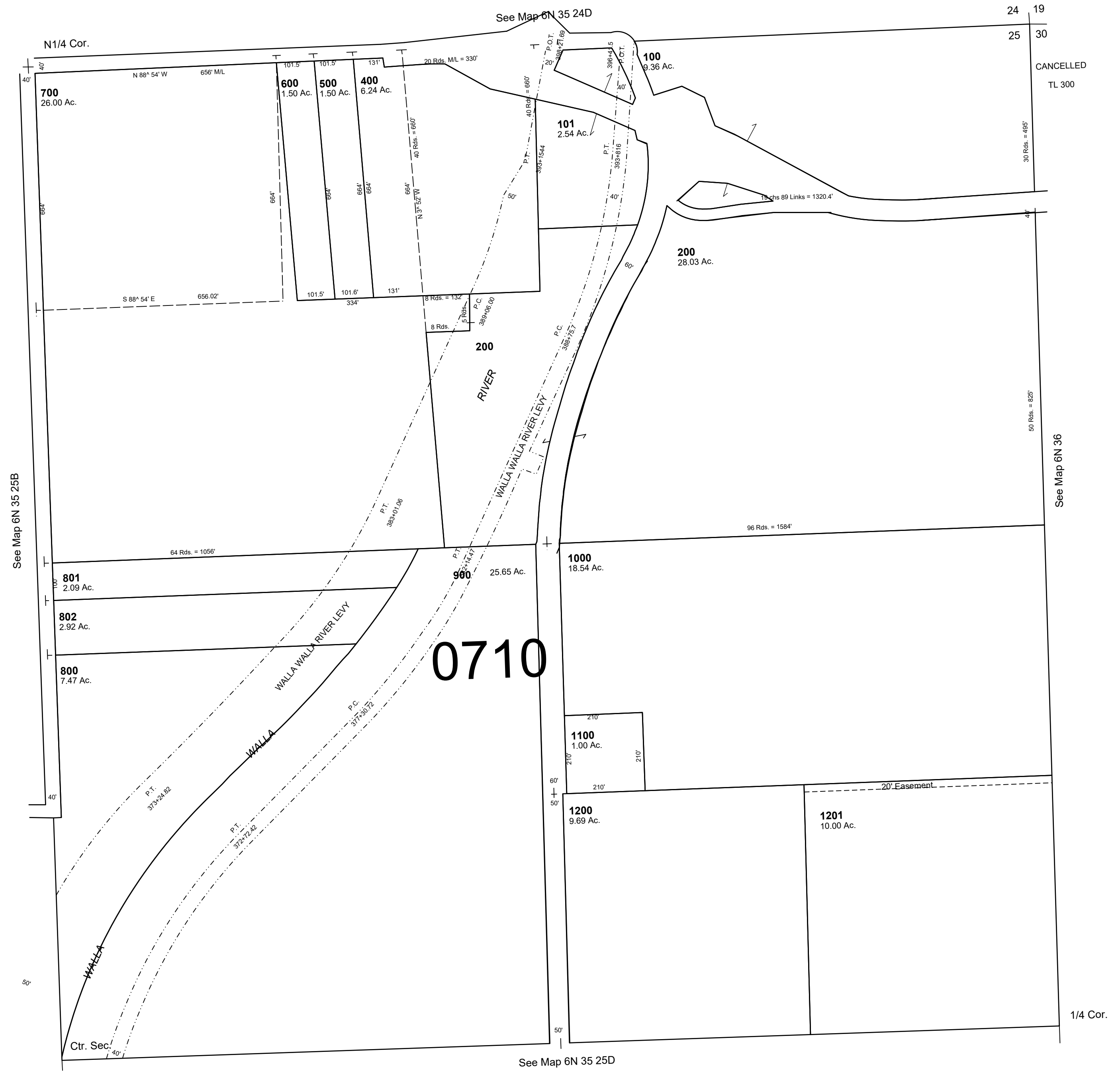


This map was prepared for Assessment & Taxation purposes only and was NOT prepared nor is it suitable for legal, engineering or surveying purposes.

NE 1/4 SEC 25 T6N R35E WM UMATILLA COUNTY

SCALE 1"=200'

6N 35 25A
AERIAL PHOTO NO. 6P-64



REVISED: 09-09-2021
6N 35 25A