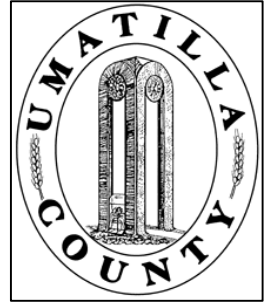


This map was prepared for Assessment & Taxation purposes only and was NOT prepared nor is it suitable for legal, engineering or surveying purposes.



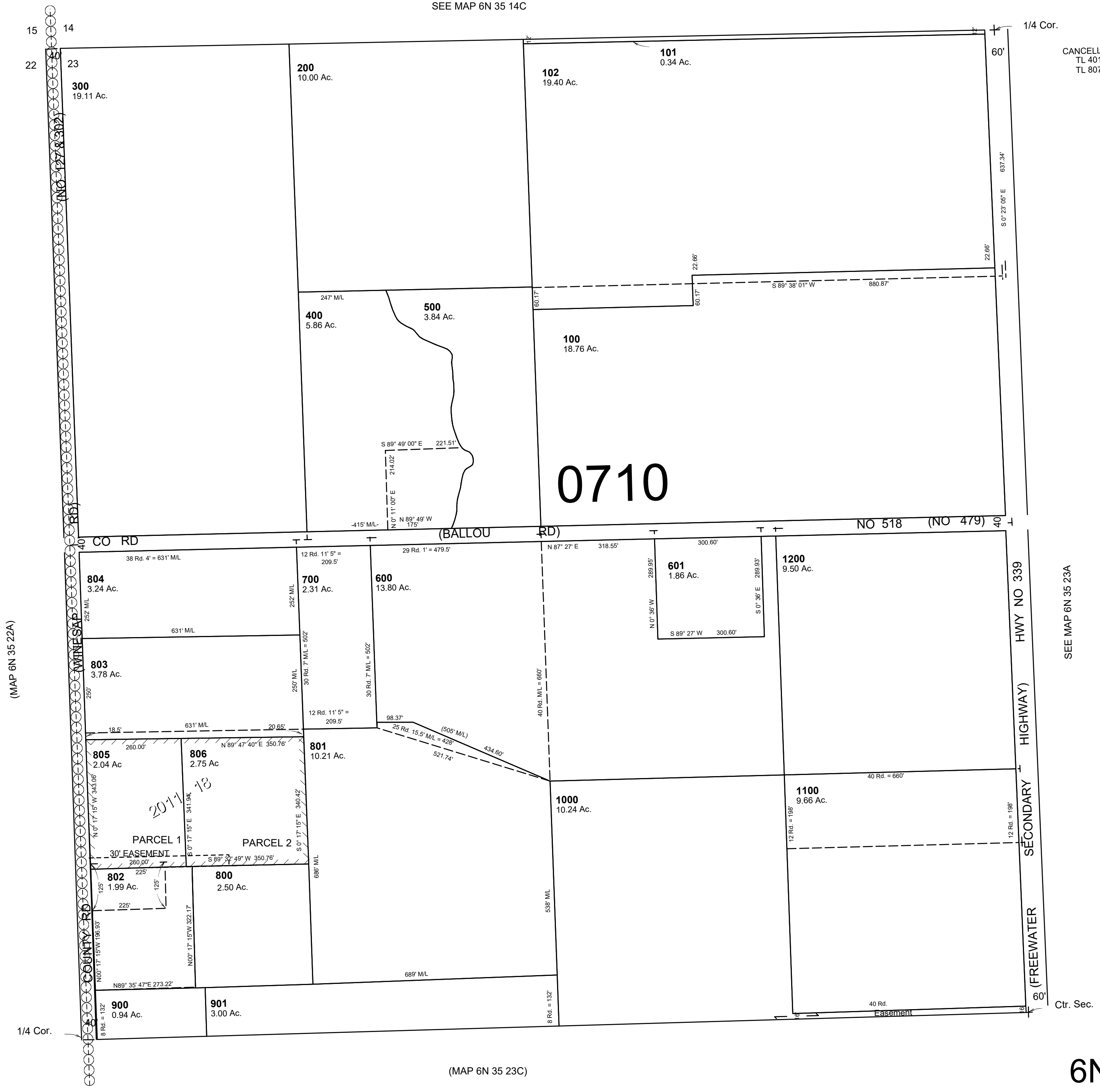
NW 1/4 SEC 23 T 6N R 35E WM UMATILLA COUNTY

SCALE: 1" = 200'

6N 35 23B

AERIAL PHOTO NO. NZ-6P-19

SEE MAP 6N 35 14C



CANCELLED
TL 401
TL 807

0710

SEE MAP 6N 35 23A

Ctr. Sec.

Revised: 09-09-2021

6N 35 23B

(MAP 6N 35 23C)

(MAP 6N 35 22A)