

This map was prepared for Assessment & Taxation purposes only and was NOT prepared nor is it suitable for legal, engineering or surveying purposes.

T6N R33E WM UMATILLA COUNTY

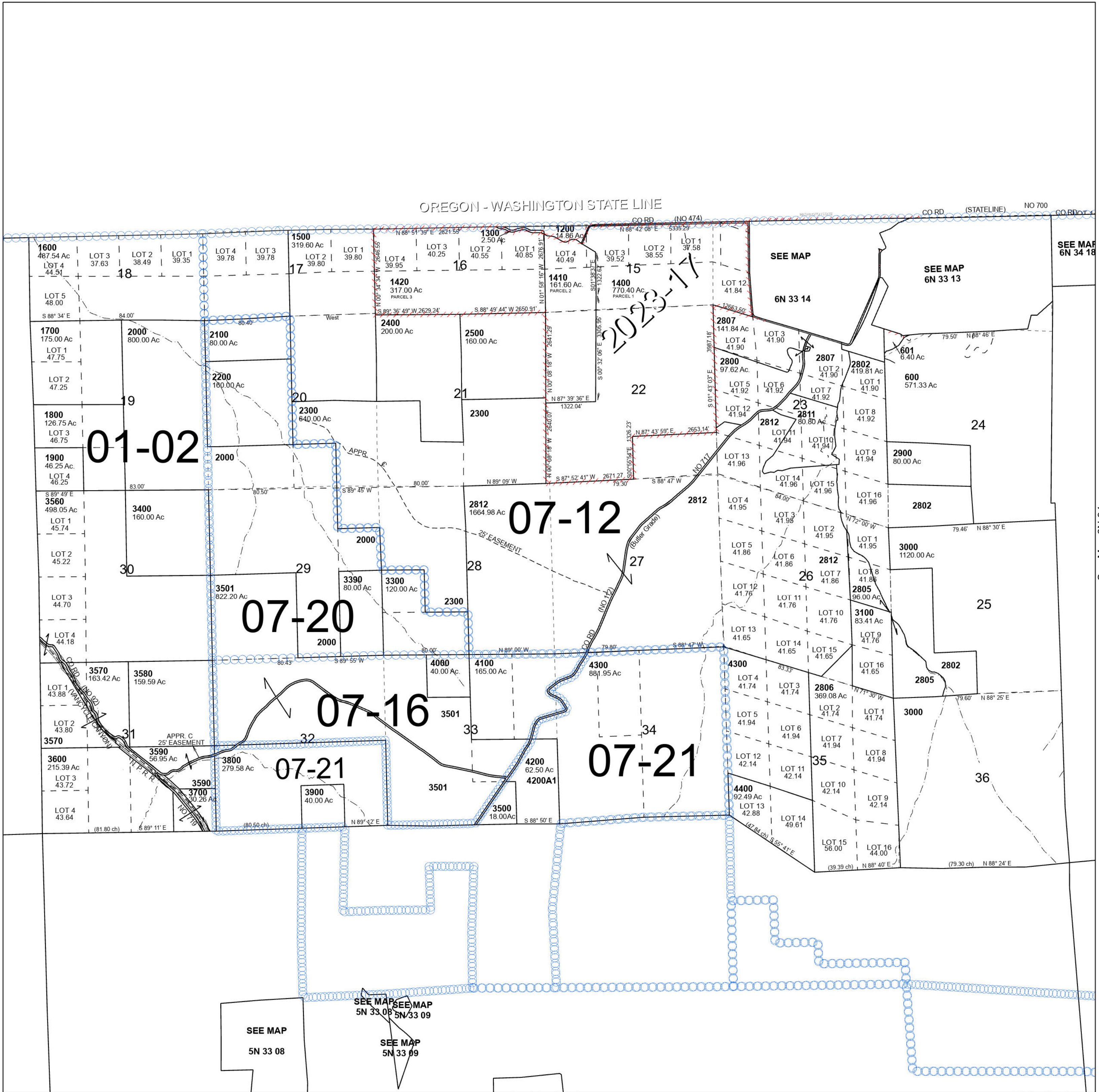
6N 33

SCALE 1" =2,000'

Cancelled Tax Lots

100	1100	4201
200	2400	4301
300	2500	
400	2600	
500	2804	
602-604	2808	
700	2809	
800	3200	
900	2700	
1000	2301-2303	

OREGON - WASHINGTON STATE LINE



See Map 6N 32

See Map 6N 34

SEE MAP
5N 33 08

SEE MAP
5N 33 09

SEE MAP
5N 33 09