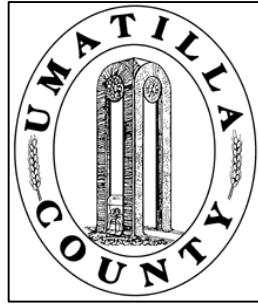


This map was prepared for Assessment & Taxation purposes only and was NOT prepared nor is it suitable for legal, engineering or surveying purposes.



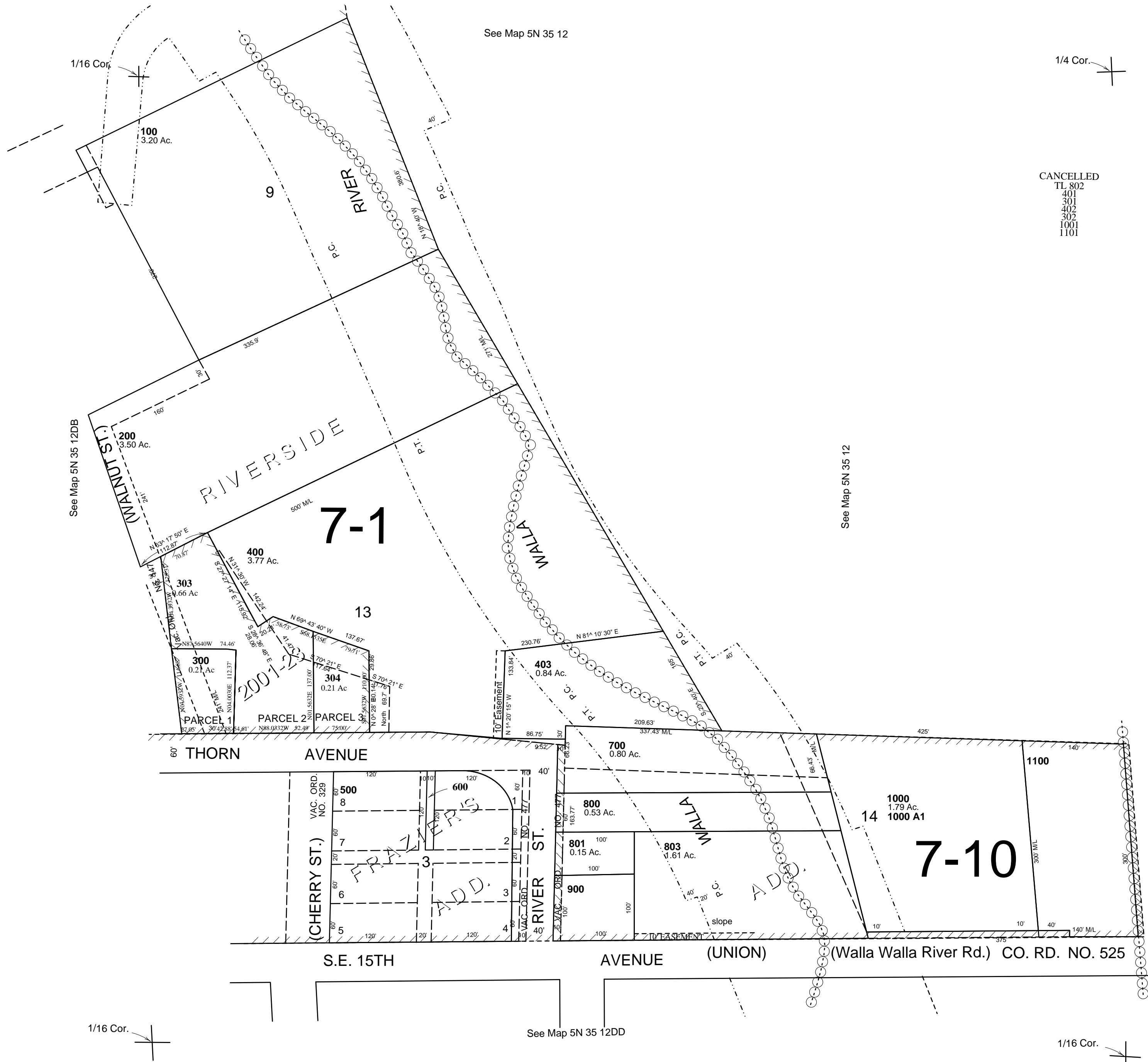
# NE 14/ SE 1/4 SEC 12 T 5N R 35E WM UMATILLA COUNTY, OR

9/23/03

## 5N3512DA

SCALE: 1" = 100'

AERIAL PHOTO NO. 11P-82



## 5N3512DA