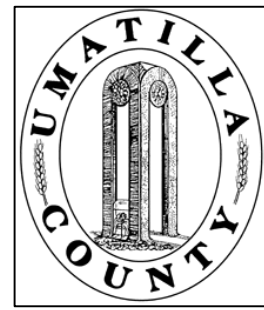


This map was prepared for Assessment & Taxation purposes only and was NOT prepared nor is it suitable for legal, engineering or surveying purposes.

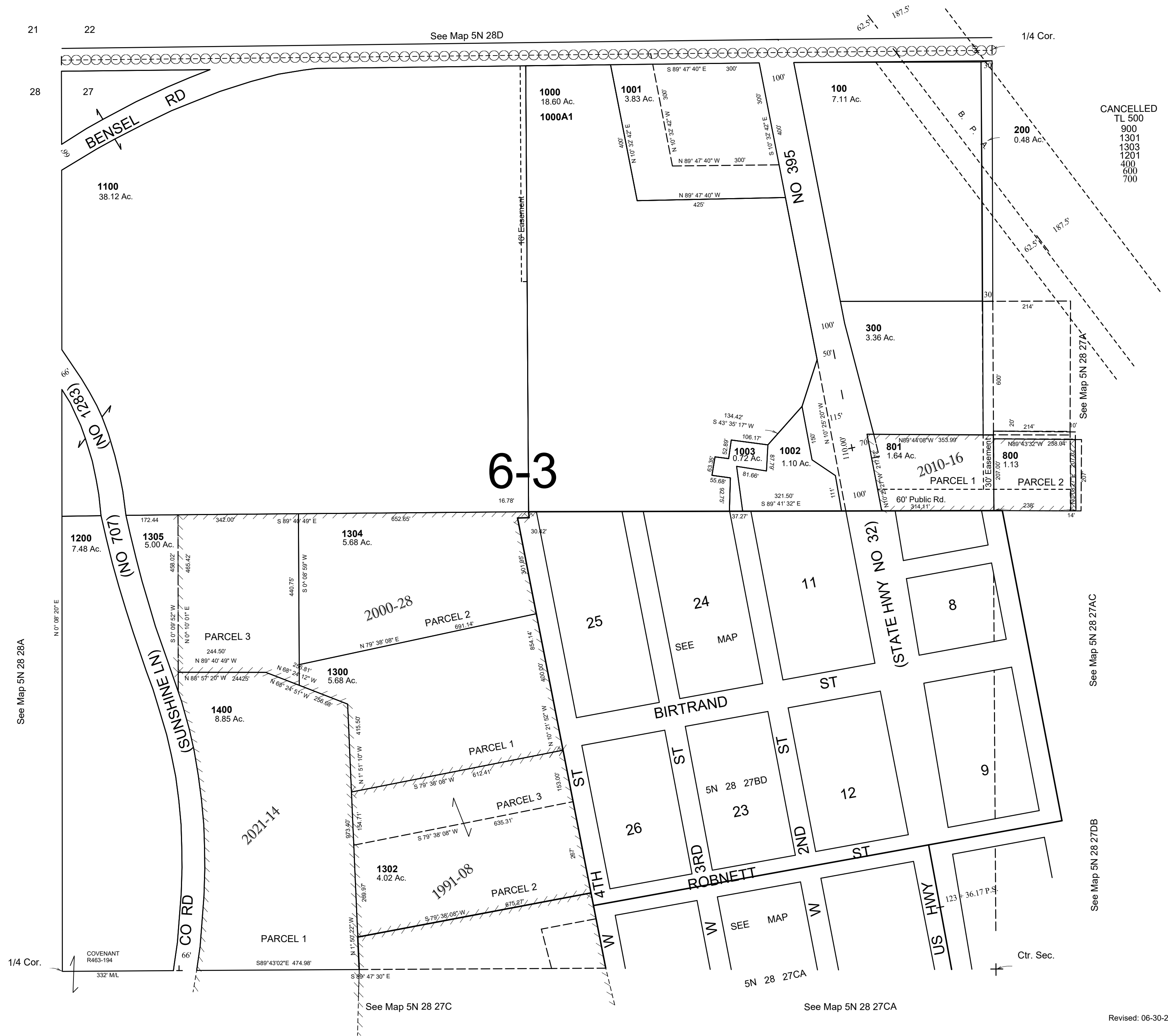


# NW1/4 SEC 27 T5N R28E WM UMATILLA COUNTY

## 5N2827B

SCALE: 1" = 200

Aerial Photo No. 1P-104



Revised: 06-30-2021

## 5N2827B