

This map was prepared for assessment purposes

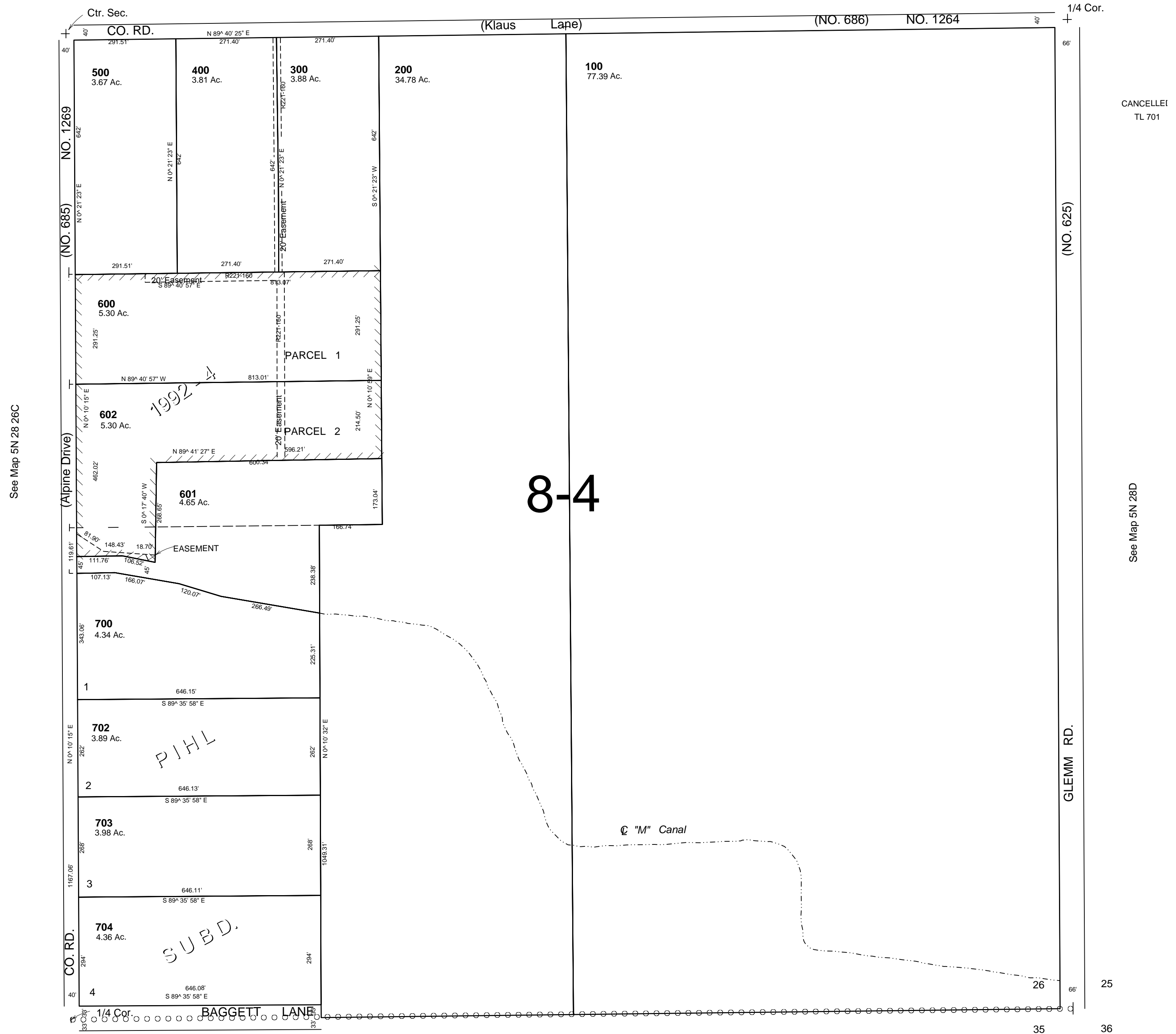
SE1/4 SEC 26 T5N R28E WM
UMATILLA COUNTY
SCALE 1"=200'

4/5/06

5N 28 26D

AERIAL PHOTO NO. 1P-103

See Map 5N 28 26A



See Map 5N 28 26C

CANCELLED
TL 701

See Map 5N 28D

8-4

See Map 5N 28 35A

5N 28 26D