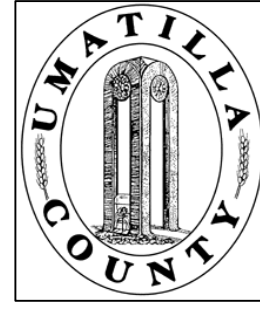


This map was prepared for Assessment & Taxation purposes only and was NOT prepared nor is it suitable for legal, engineering or surveying purposes.



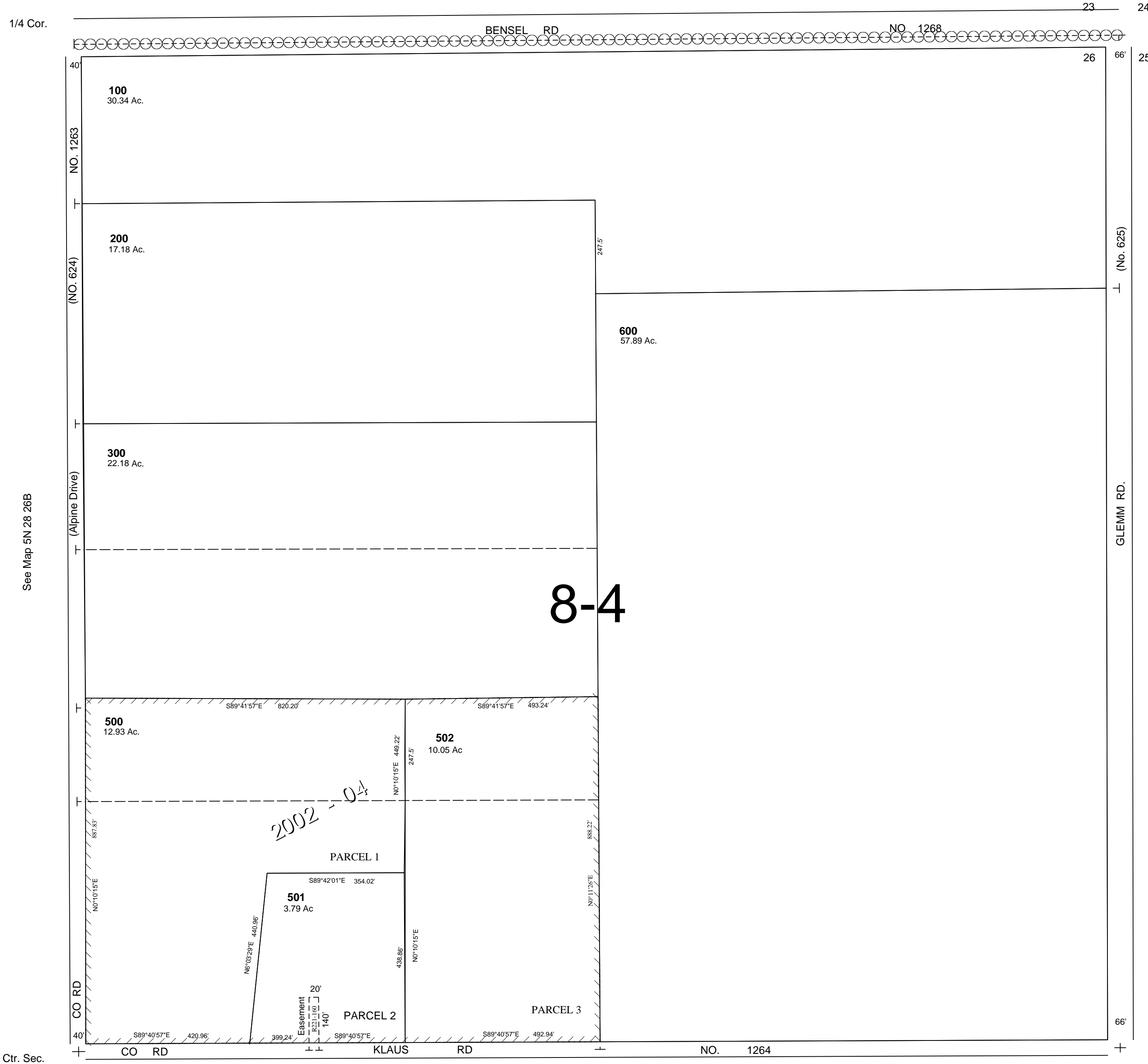
NE 1/4 SEC 26 T5N R28E WM
UMATILLA COUNTY
SCALE: 1"200'

9/24/03

5N 28 26A

AERIAL PHOTO NO. 1P-103

See Map 5N 28D



CANCELLED NOS.

400

See Map 5N 28 26B

See Map 5N 28D

5N 28 26A