

This map was prepared for Assessment & Taxation purposes only and was NOT prepared nor is it suitable for legal, engineering or surveying purposes.

Cancelled Tax Lots

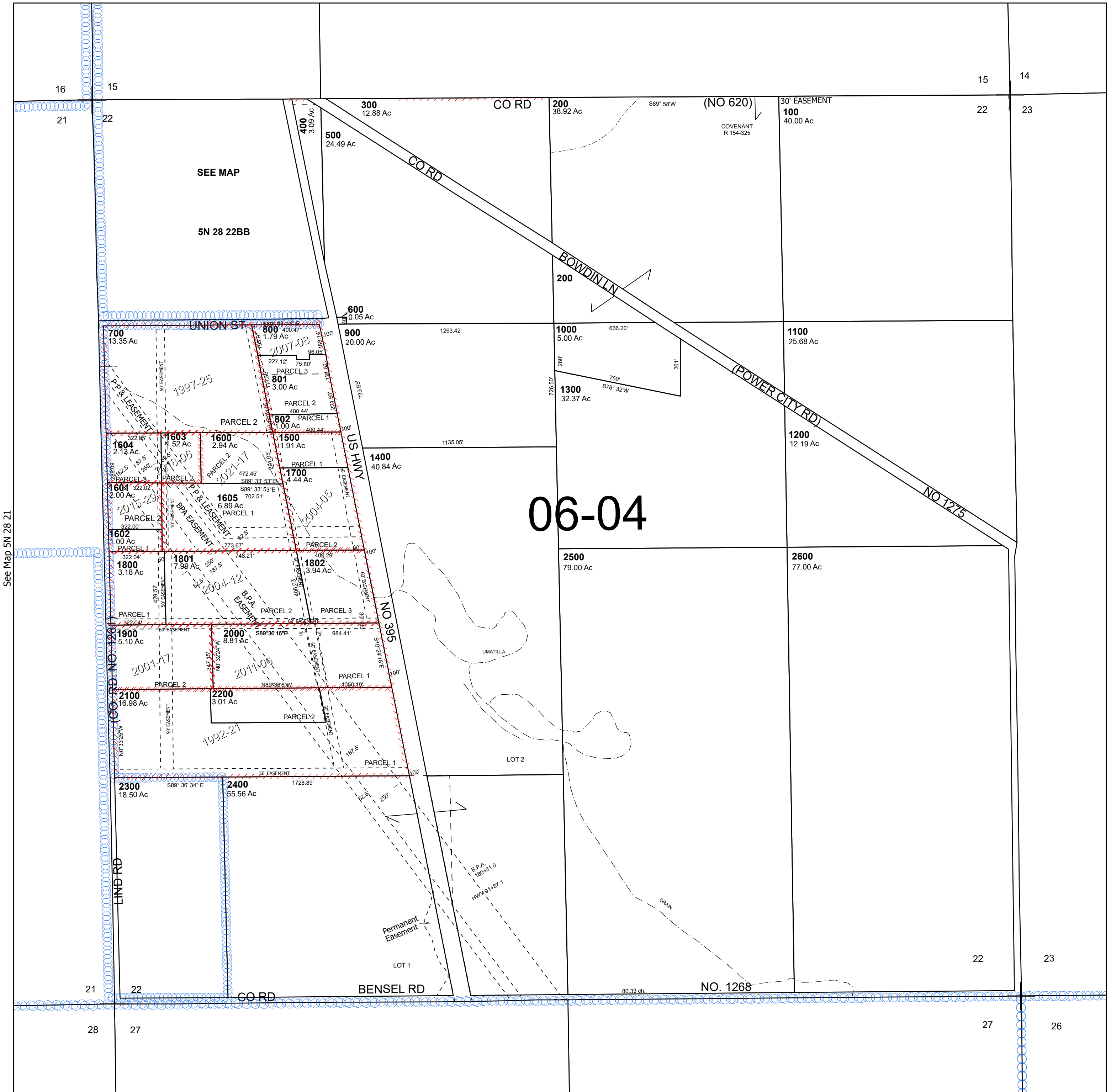
# SEC 22 T5N R28E WM UMATILLA COUNTY

## 5N 28 22

Umatilla

SCALE 1" =400'

See Map 5N 28 15



See Map 5N 28 21

See Map 5N 28 23

# 06-04

Revised 3/27/2025

See Map 5N 28 27A

## 5N 28 22