

This map was prepared for Assessment & Taxation purposes only and was NOT prepared nor is it suitable for legal, engineering or surveying purposes.

SEC 20 T5N R28E WM UMATILLA COUNTY

5N 28 20

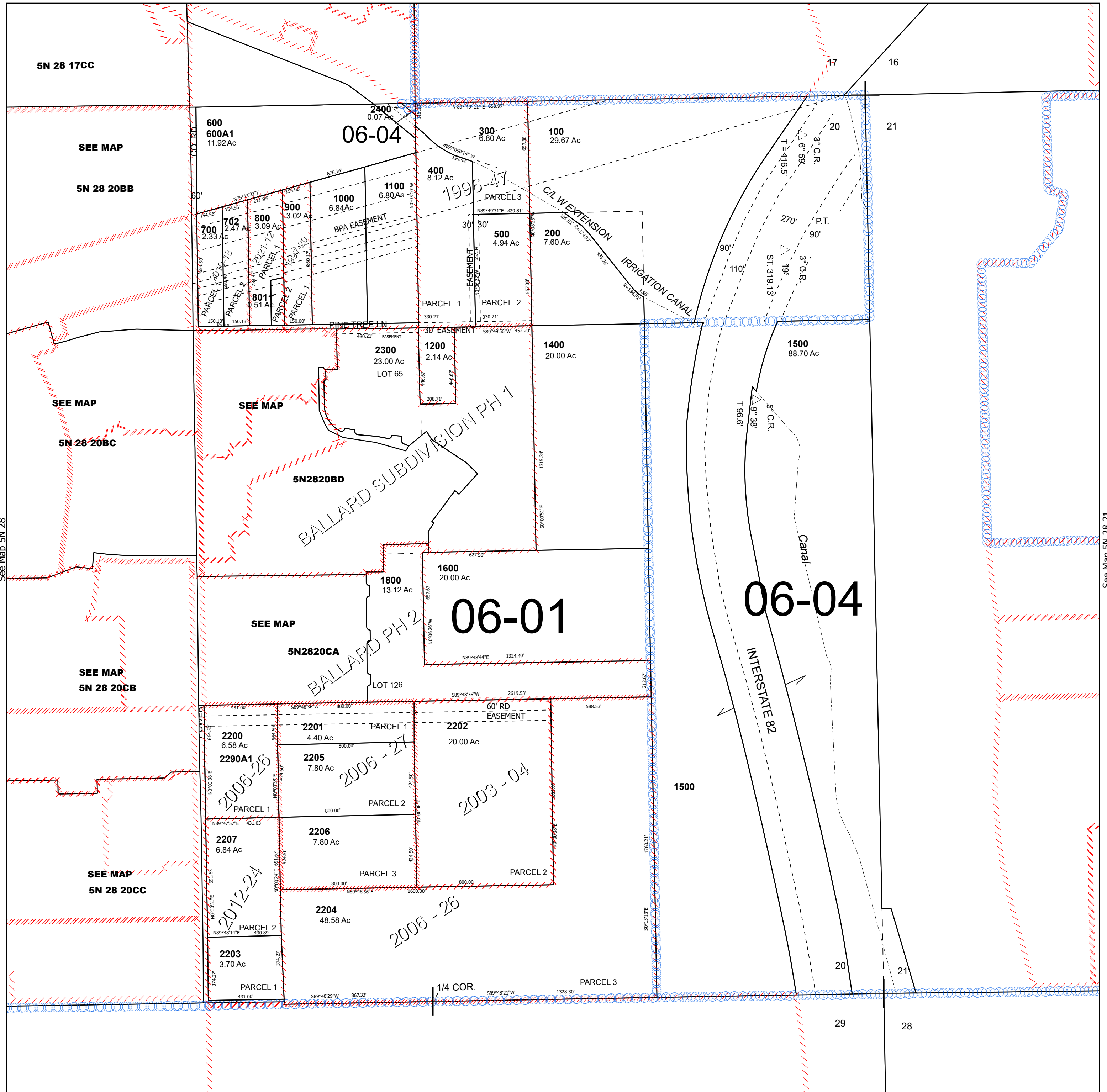
Umatilla

Cancelled Tax Lots

- 701
- 1300
- 1700
- 1801
- 1900
- 2000
- 2100
- 2290A1

SCALE 1" = 400'

See Map 5N 28 17D



See Map 5N 28

See Map 5N 28 21

5N 28 20