

This map was prepared for Assessment & Taxation purposes only and was NOT prepared nor is it suitable for legal, engineering or surveying purposes.

SW 1/4 NW 1/4 SEC 16 T5N R28E WM UMATILLA COUNTY

Umatilla

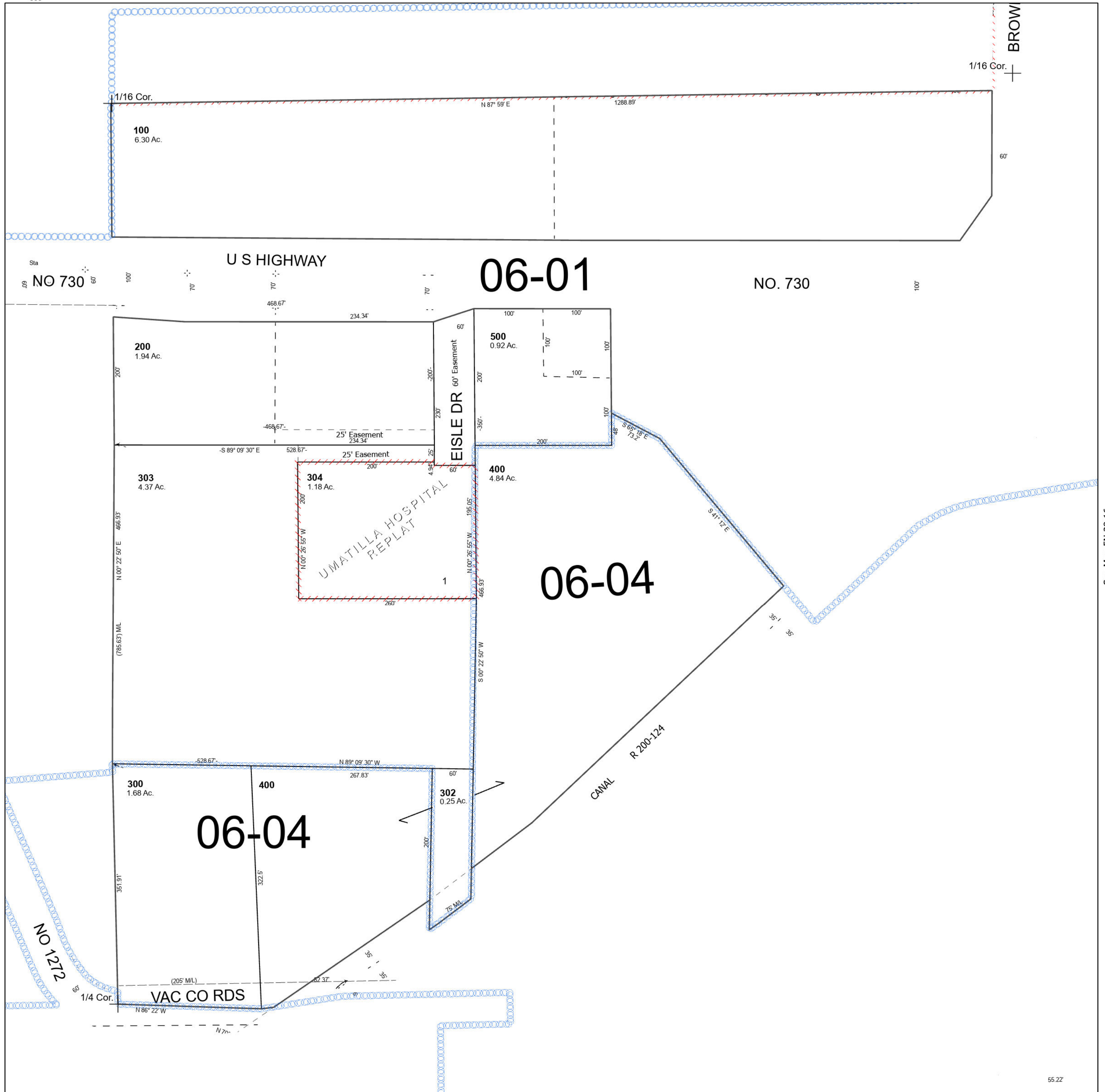
SCALE 1" = 100'

5N 28 16BC

Cancelled Tax Lots

- 101
- 201
- 202
- 203
- 301
- 305
- 306
- 307
- 401
- 600

See Map 5N 28 16BB



See Map 5N 28 17AD

See Map 5N 28 16