

This map was prepared for Assessment & Taxation purposes only and was NOT prepared nor is it suitable for legal, engineering or surveying purposes.

Cancelled Tax Lots

- 1300
- 1301
- 1400
- 1400A1
- 1500
- 1800
- 1900

# SHEET NO.1

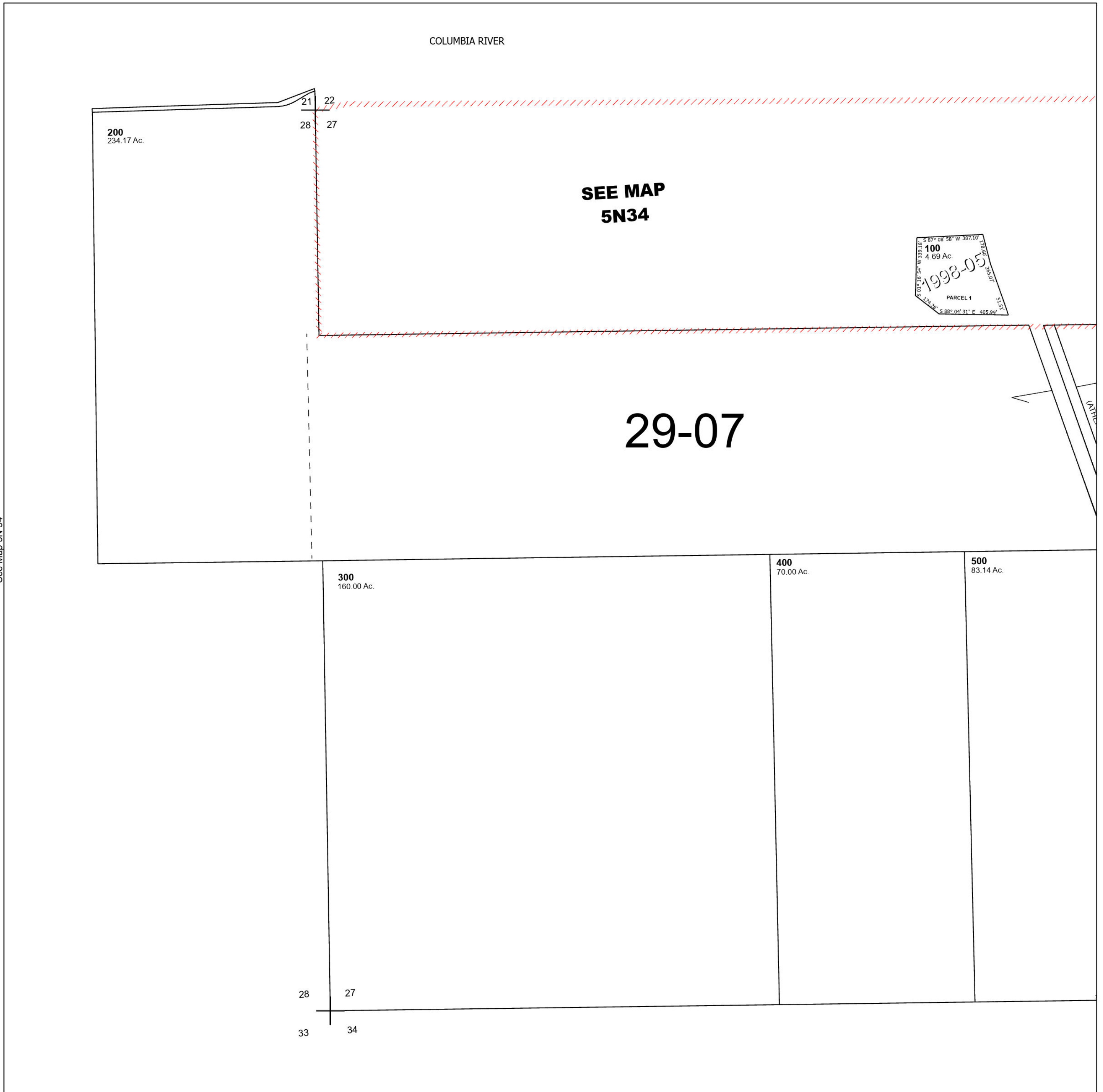
## SEC 27 T5N R34E WM

### UMATILLA COUNTY

**5N 34 27**  
**SHEET NO.1**

SCALE 1" =400'

See Map 5N 34



See Map 5N 34

See Map 5N 34

This map was prepared for Assessment & Taxation purposes only and was NOT prepared nor is it suitable for legal, engineering or surveying purposes.

Cancelled Tax Lots

- 1300
- 1301
- 1400
- 1400A1
- 1500
- 1800
- 1900

# SHEET NO.2

## SEC 27 T5N R34E WM

### UMATILLA COUNTY

# 5N 34 27

## SHEET NO.2

SCALE 1" = 400'

See Map 5N 34

