

This map was prepared for Assessment & Taxation purposes only and was NOT prepared nor is it suitable for legal, engineering or surveying purposes.

SEC 32 T5N R29E WM UMATILLA COUNTY

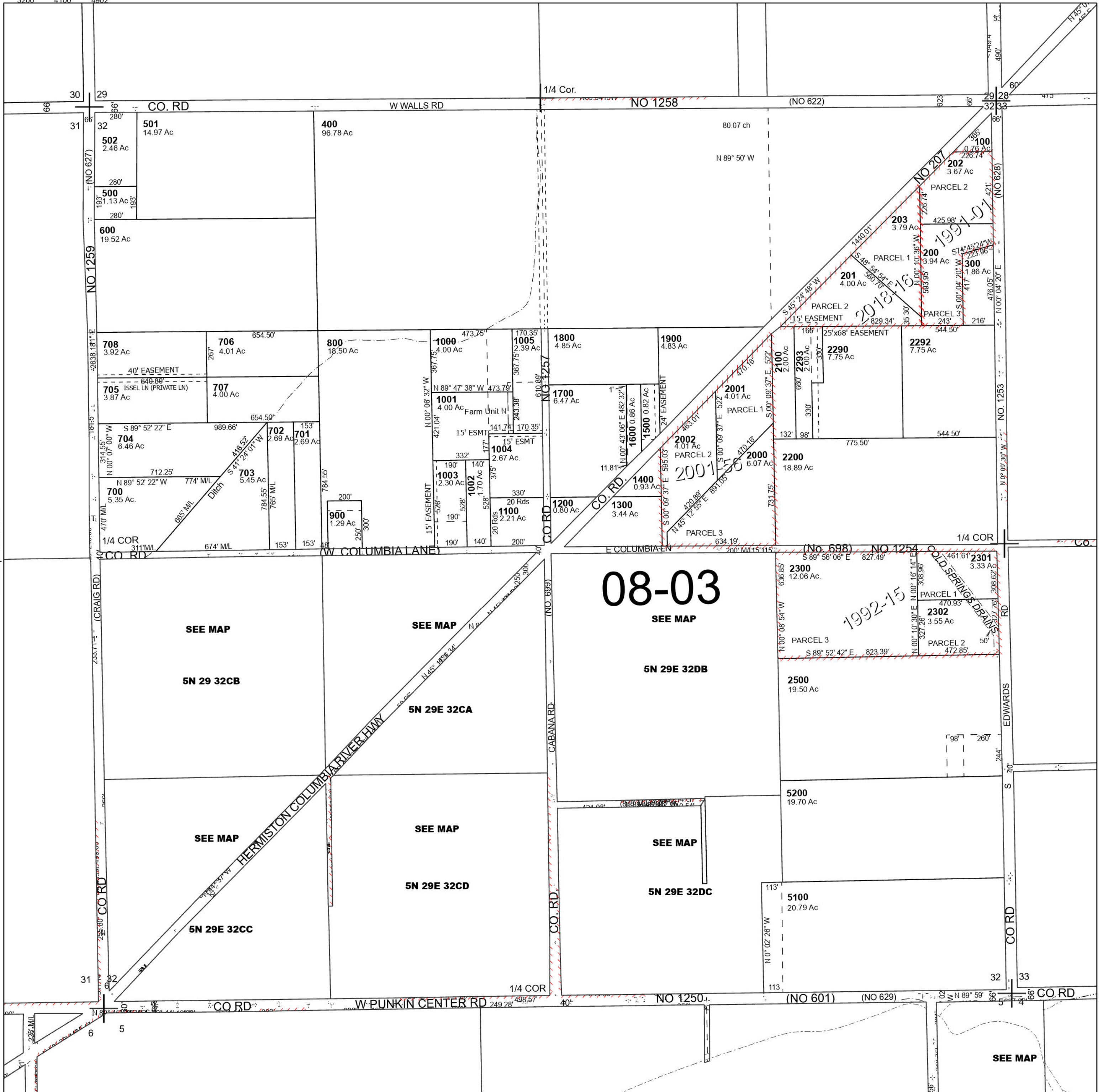
5N 29 32

SCALE 1" = 400'

See Map 5N 29

Cancelled Tax Lots

2291	3300	4200	4903
2400	3400	4300	4904
2600	3500	4400	4905
2700-2706	3501	4500	5000-5002
2800	3600	4600-4612	
2900	3700	4700-4704	
3000-3009	3800	4800	
3090-3097	3900	4900	
3100-3107	4000	4901	
3200	4100	4902	



See Map 5N 29 31A

See Map 5N 29 33

5N 29 32