

This map was prepared for Assessment & Taxation purposes only and was NOT prepared nor is it suitable for legal, engineering or surveying purposes.

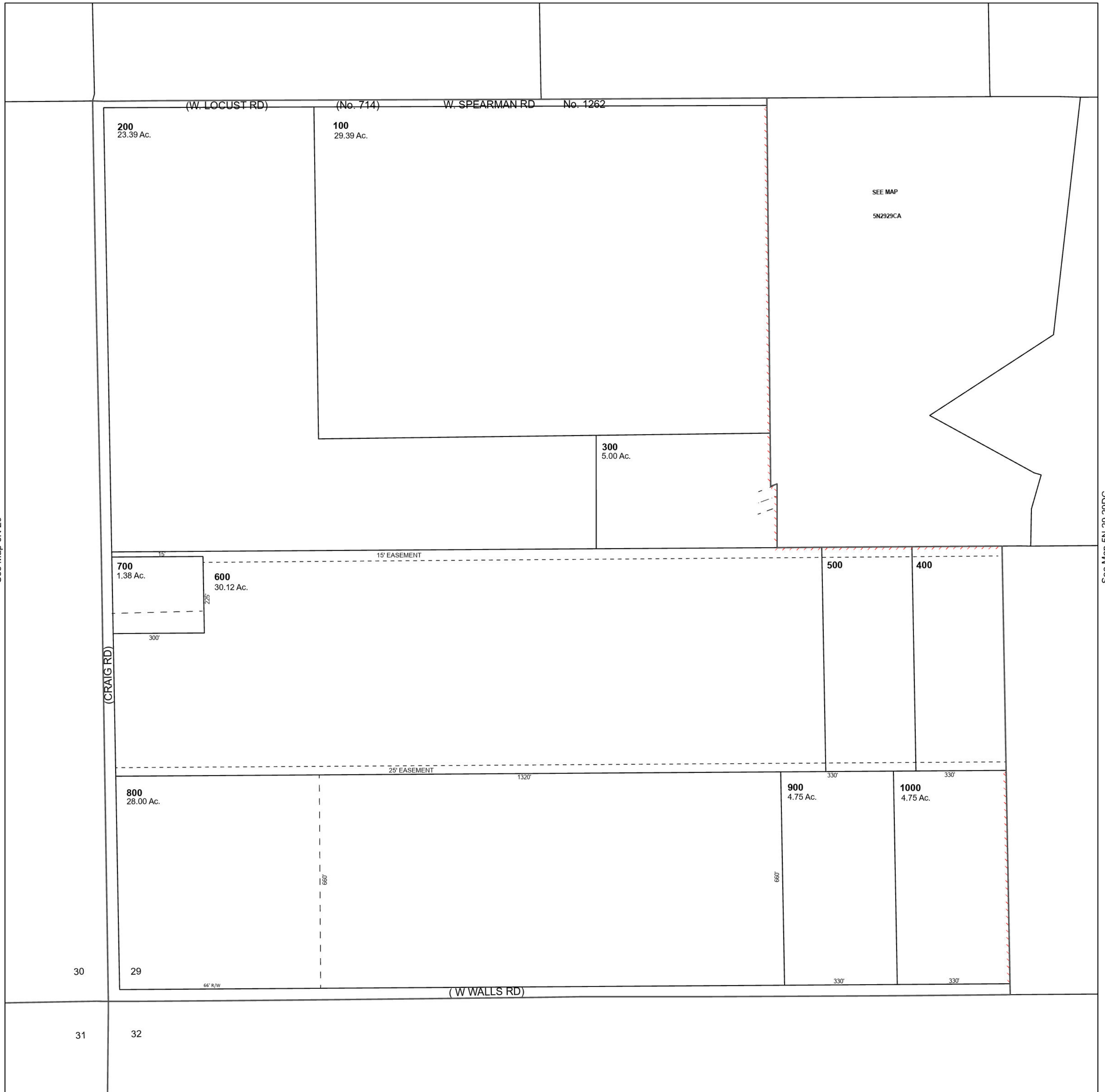
Cancelled Tax Lots

SW 1/4 SEC 29 T5N R29E WM UMATILLA COUNTY

5N 29 29C

SCALE 1" = 200'

See Map 5N 29 29BC



See Map 5N 29

See Map 5N 29 29DC