

This map was prepared for Assessment & Taxation purposes only and was NOT prepared nor is it suitable for legal, engineering or surveying purposes.

Cancelled Tax Lots

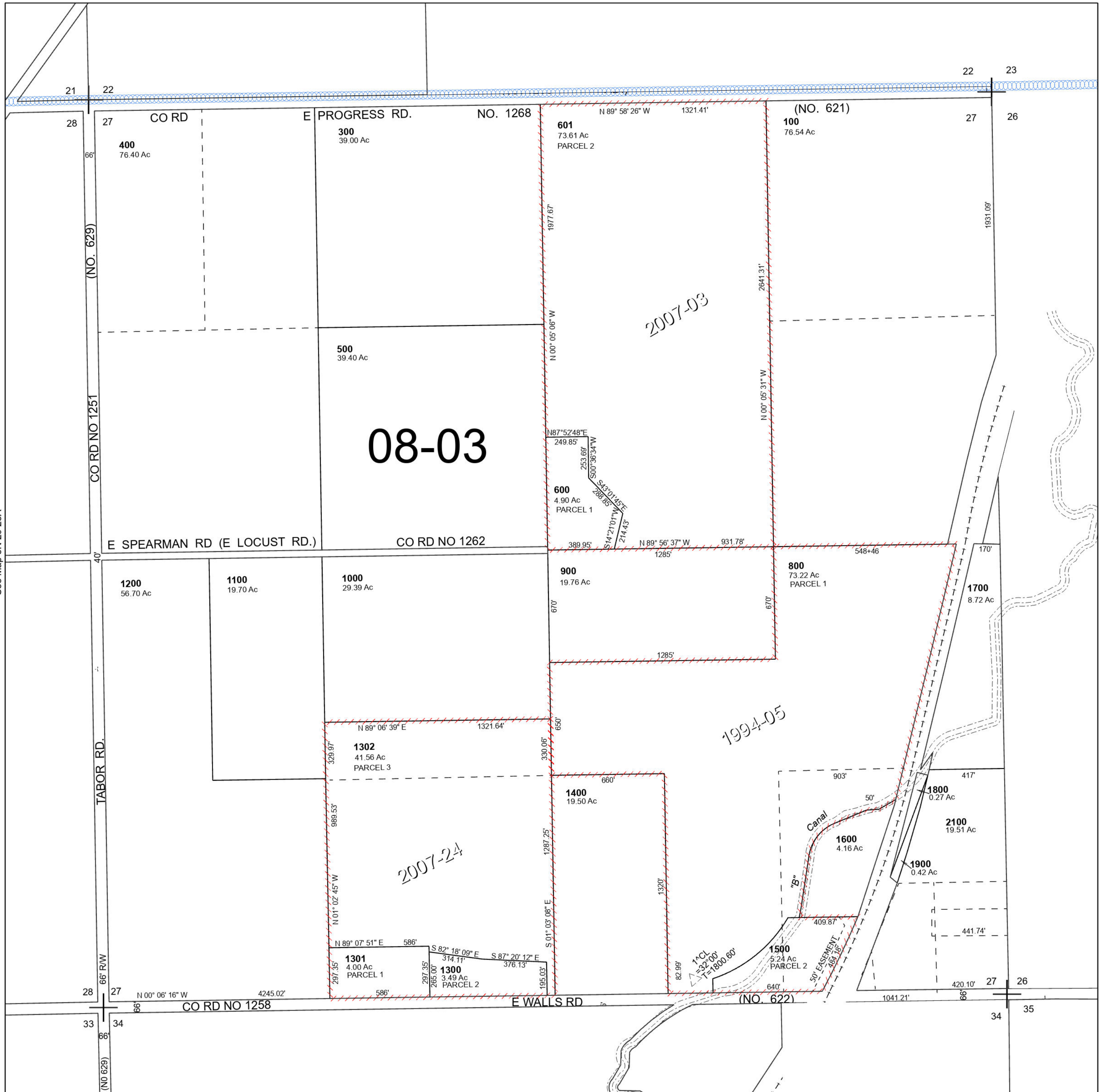
200  
2000  
2200  
2100A1

# SEC 27 T5N R29E WM UMATILLA COUNTY

## 5N 29 27

SCALE 1" = 400'

See Map 5N 29



See Map 5N 29 28A

See Map 5N 29

Revised 3/21/2024

See Map 5N 29 34

## 5N 29 27