

This map was prepared for Assessment & Taxation purposes only and was NOT prepared nor is it suitable for legal, engineering or surveying purposes.

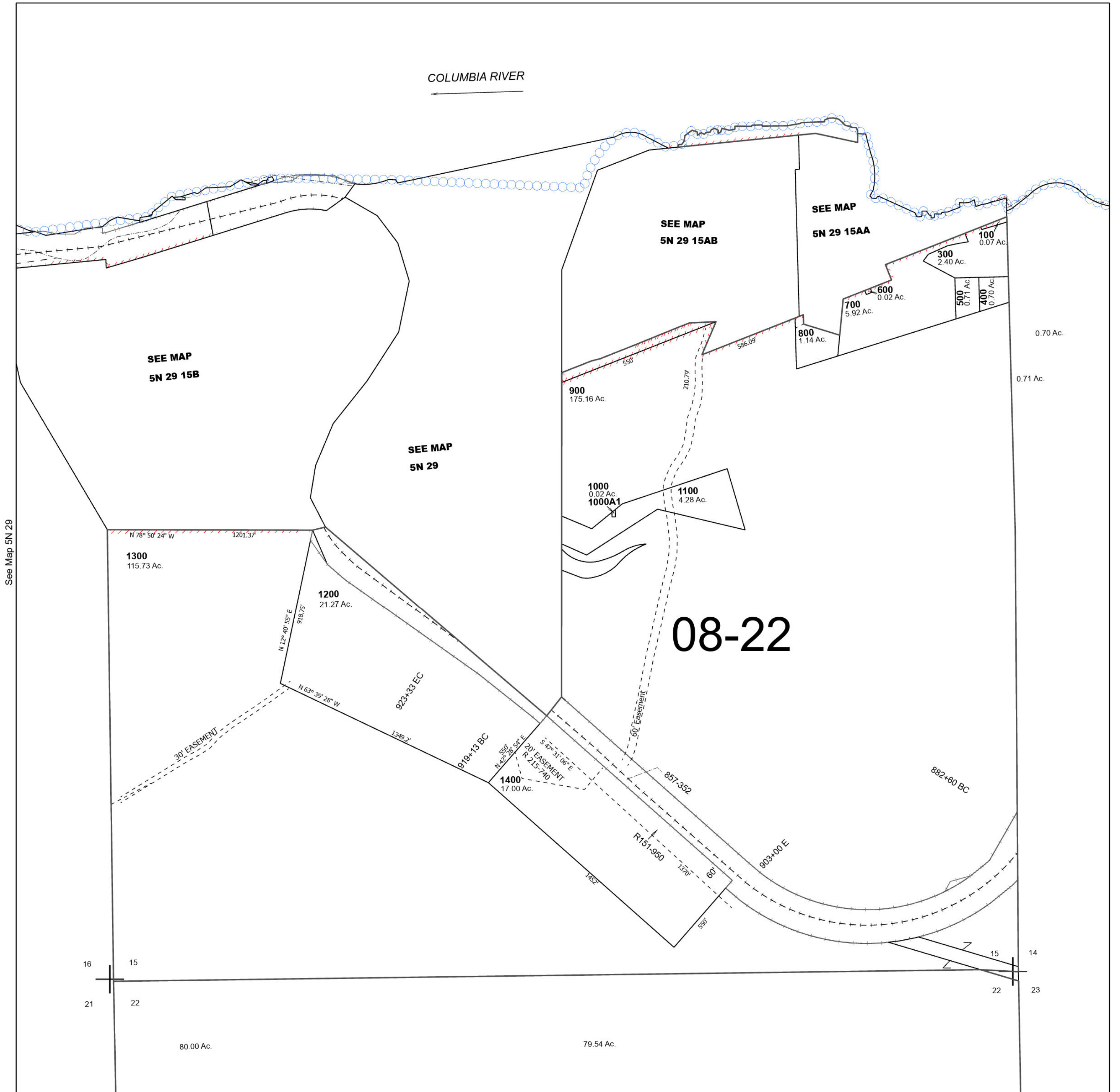
Cancelled Tax Lots
200

SEC 15 T5N R29E WM UMATILLA COUNTY

5N 29 15

SCALE 1" = 400'

See Map 5N 29



See Map 5N 29

See Map 5N 29

Revised 6/7/2024

See Map 5N 29 22

5N 29 15