

This map was prepared for Assessment & Taxation purposes only and was NOT prepared nor is it suitable for legal, engineering or surveying purposes.

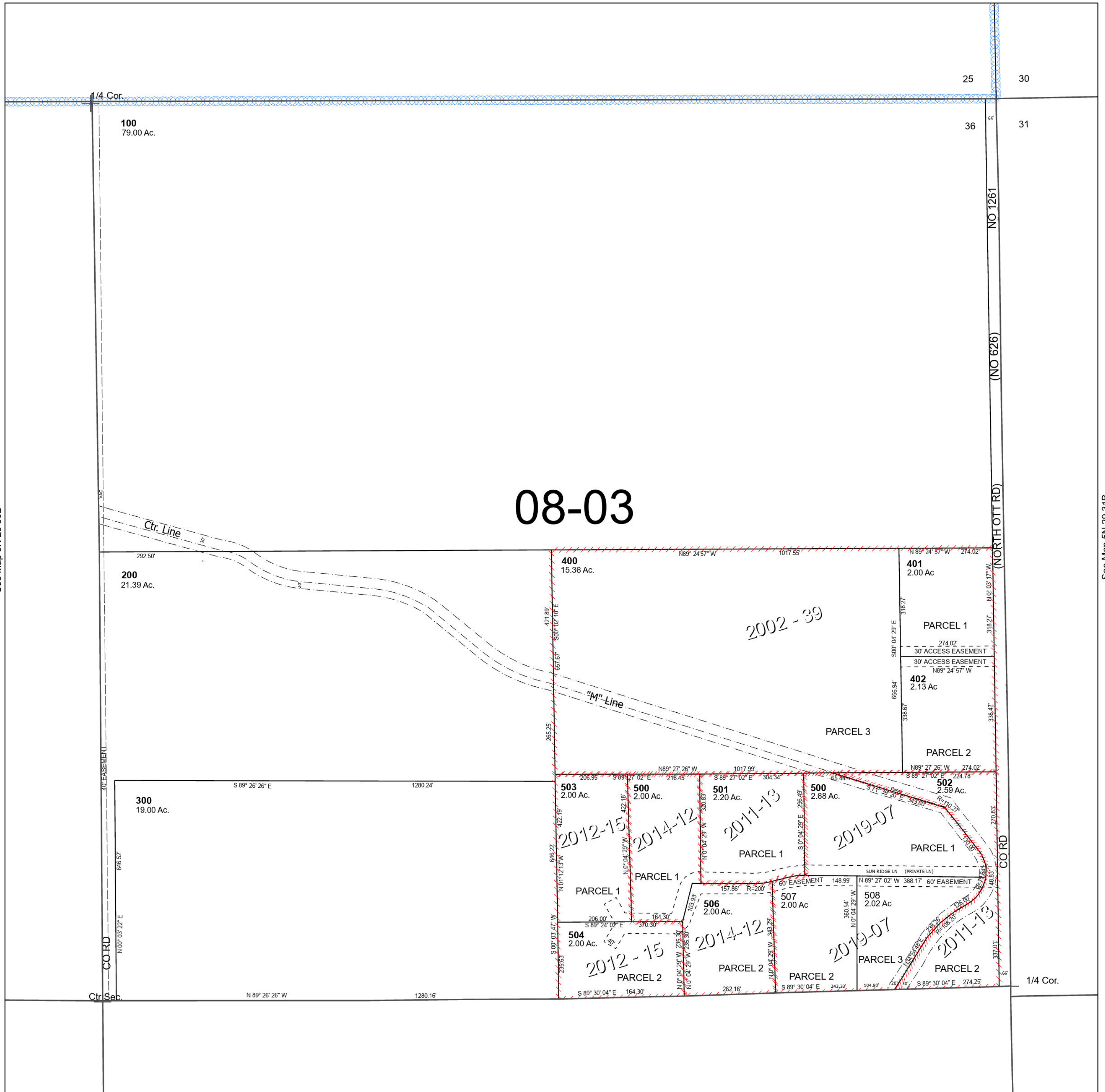
Cancelled Tax Lots

NE 1/4 SEC 36 T5N R28E WM UMATILLA COUNTY

5N 28 36A

SCALE 1" = 200'

See Map 5N 28 25



08-03

See Map 5N 28 36B

See Map 5N 29 31B

Revised 6/12/2024

See Map 5N 28 36D

5N 28 36A