

This map was prepared for Assessment & Taxation purposes only and was NOT prepared nor is it suitable for legal, engineering or surveying purposes.

SE 1/4 SEC 34 T5N R28E WM UMATILLA COUNTY

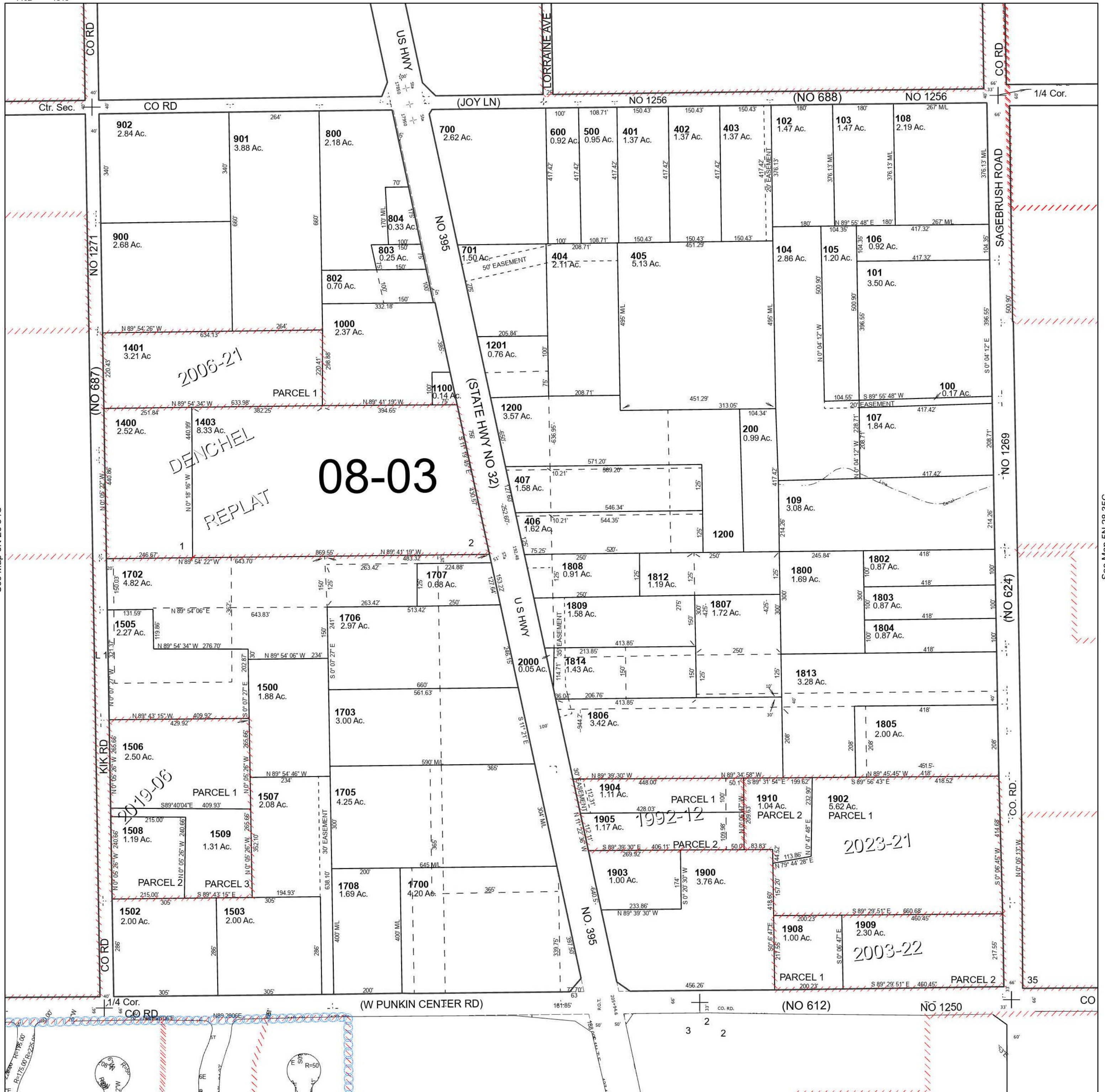
5N 28 34D

SCALE 1" = 200'

See Map 5N 28 34A

Cancelled Tax Lots

300-302	1501	1816
400	1504	1901
408	1600	1906
702	1701	1907
801	1704	2001
805	1801	2010
1202-1205	1809A1	
1300	1810	
1301	1811	
1402	1815	



See Map 5N 28 34C

See Map 5N 28 35C

5N 28 34D