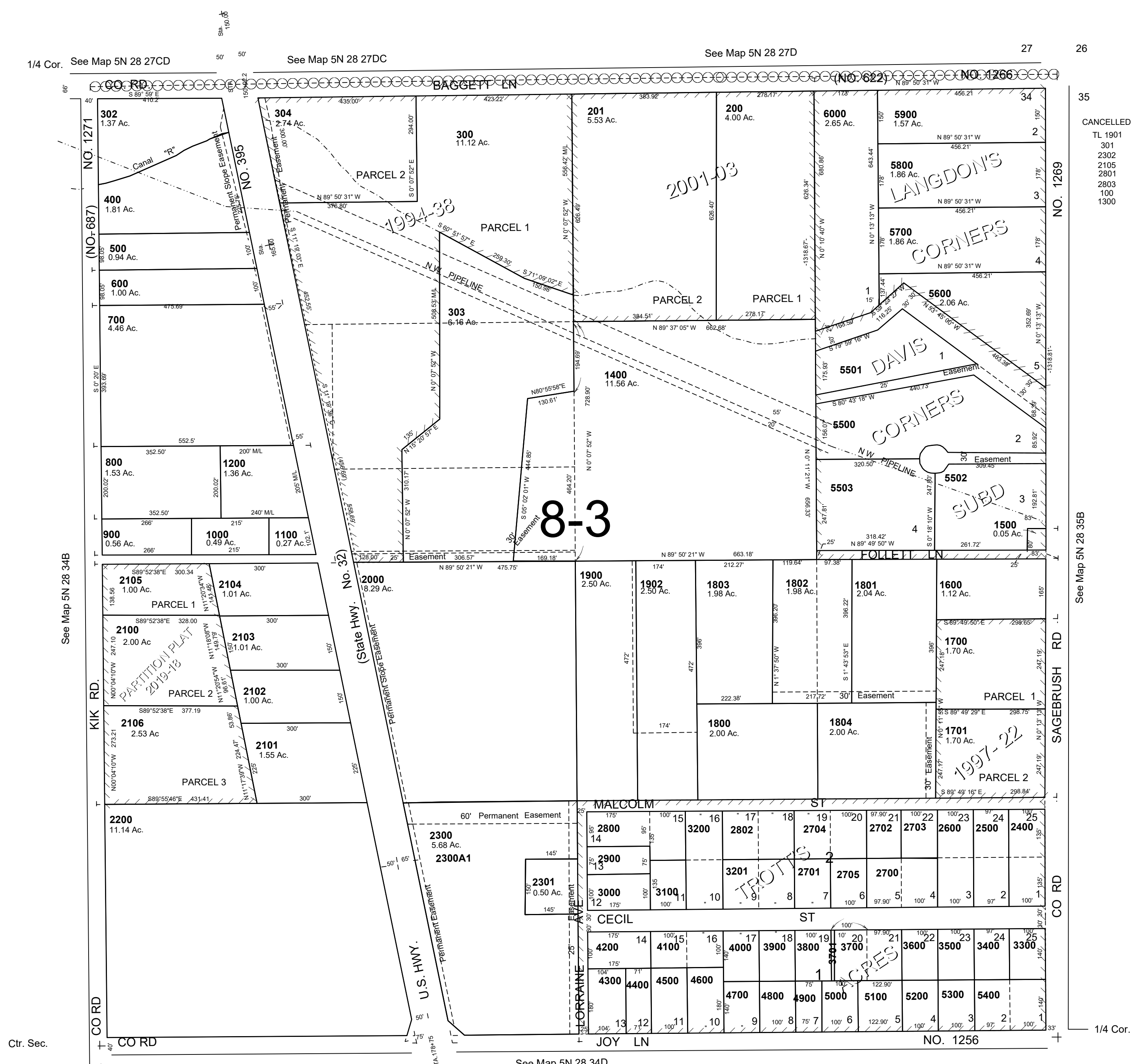


This map was prepared for Assessment & Taxation purposes only and was NOT prepared nor is it suitable for legal, engineering or surveying purposes.

NE 1/4 SEC 34 T5N R28E WM UMATILLA COUNTY SCALE 1"=200'

5N 28 34A

AERIAL PHOTO NO. NZ 1P-104



- 35
- CANCELLED
- TL 1901
- 301
- 2302
- 2105
- 2801
- 2803
- 100
- 1300

See Map 5N 28 35B

Ctr. Sec.

Revised: 6/26/2019

5N 28 34A