

This map was prepared for Assessment & Taxation purposes only and was NOT prepared nor is it suitable for legal, engineering or surveying purposes.

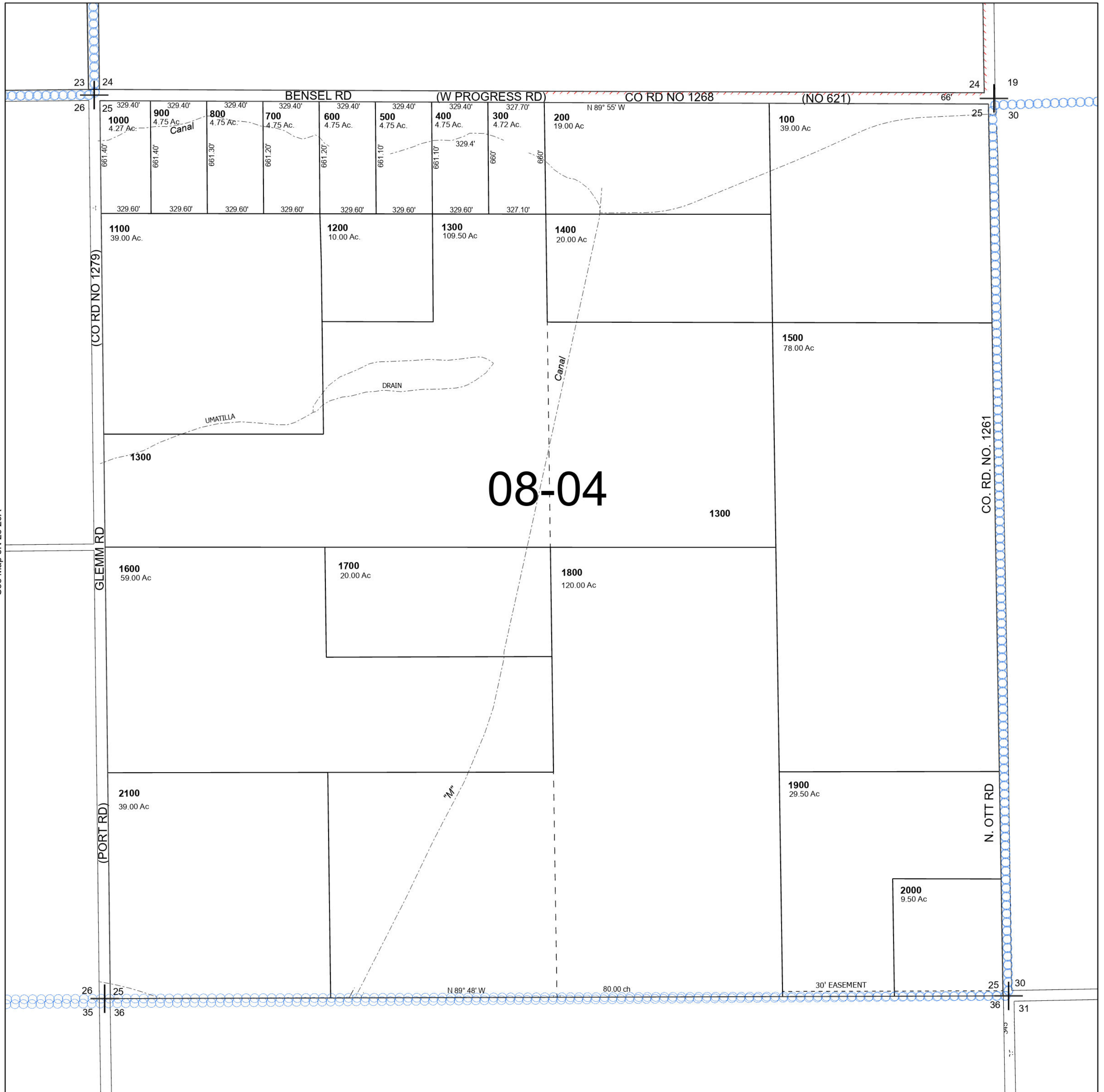
Cancelled Tax Lots

SEC 25 T5N R28E WM UMATILLA COUNTY

5N 28 25

SCALE 1" = 400'

See Map 5N 28 24



See Map 5N 28 26A

See Map 5N 29

Revised 5/14/2024

See Map 5N 28 36B

5N 28 25