

This map was prepared for Assessment & Taxation purposes only and was NOT prepared nor is it suitable for legal, engineering or surveying.

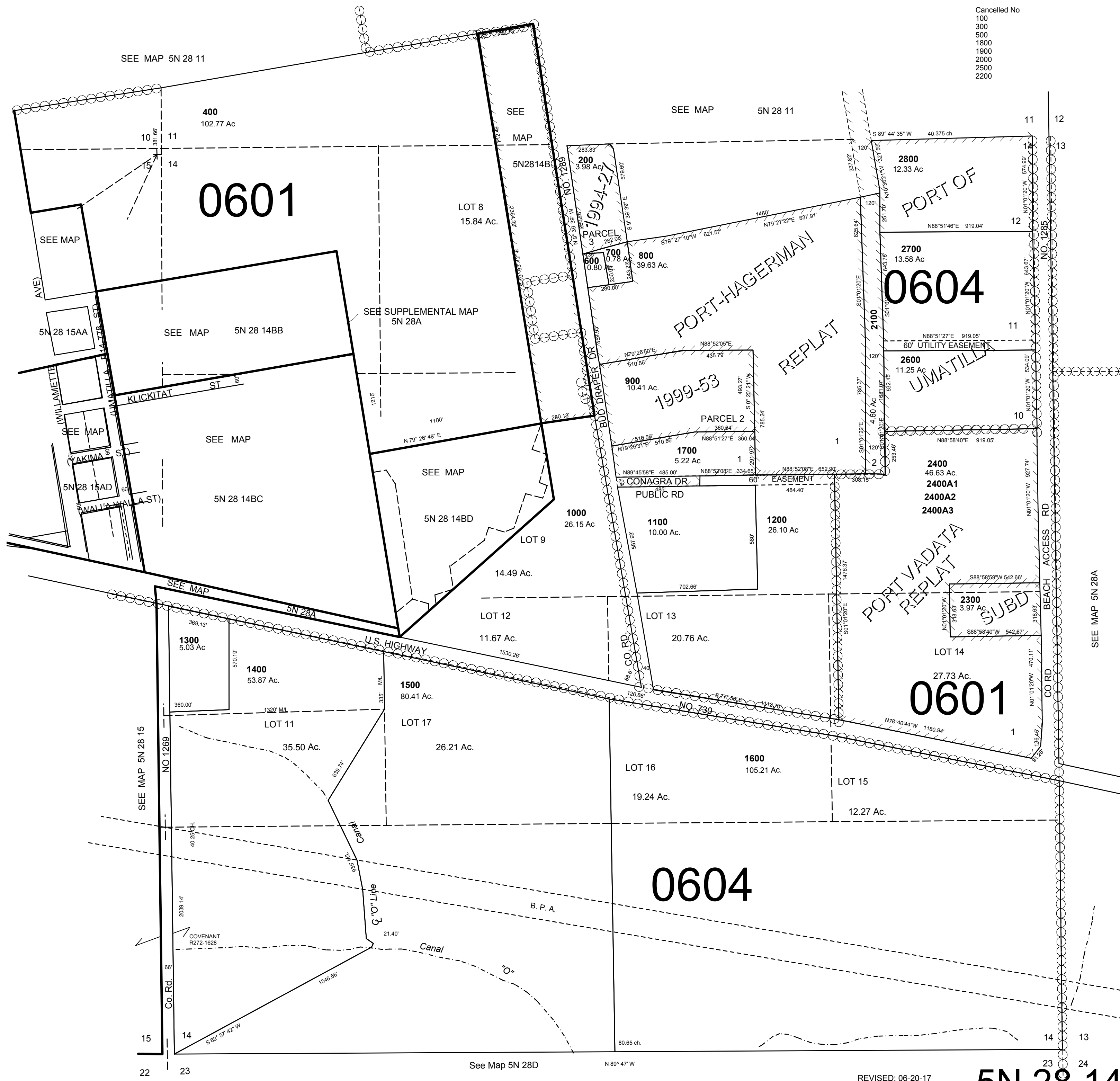
1"=400'

SEC 14 T5N R28E WM UMATILLA COUNTY

5N 28 14

AERIAL PHOTO NO. NZ 1P 58-60 & 102-103

- Cancelled No
- 100
 - 300
 - 500
 - 1800
 - 1900
 - 2000
 - 2500
 - 2200



REVISED: 06-20-17

5N 28 14