

This map was prepared for Assessment & Taxation purposes only and was NOT prepared nor is it suitable for legal, engineering or surveying purposes.

SEC 22 T5N R27E WM UMATILLA COUNTY

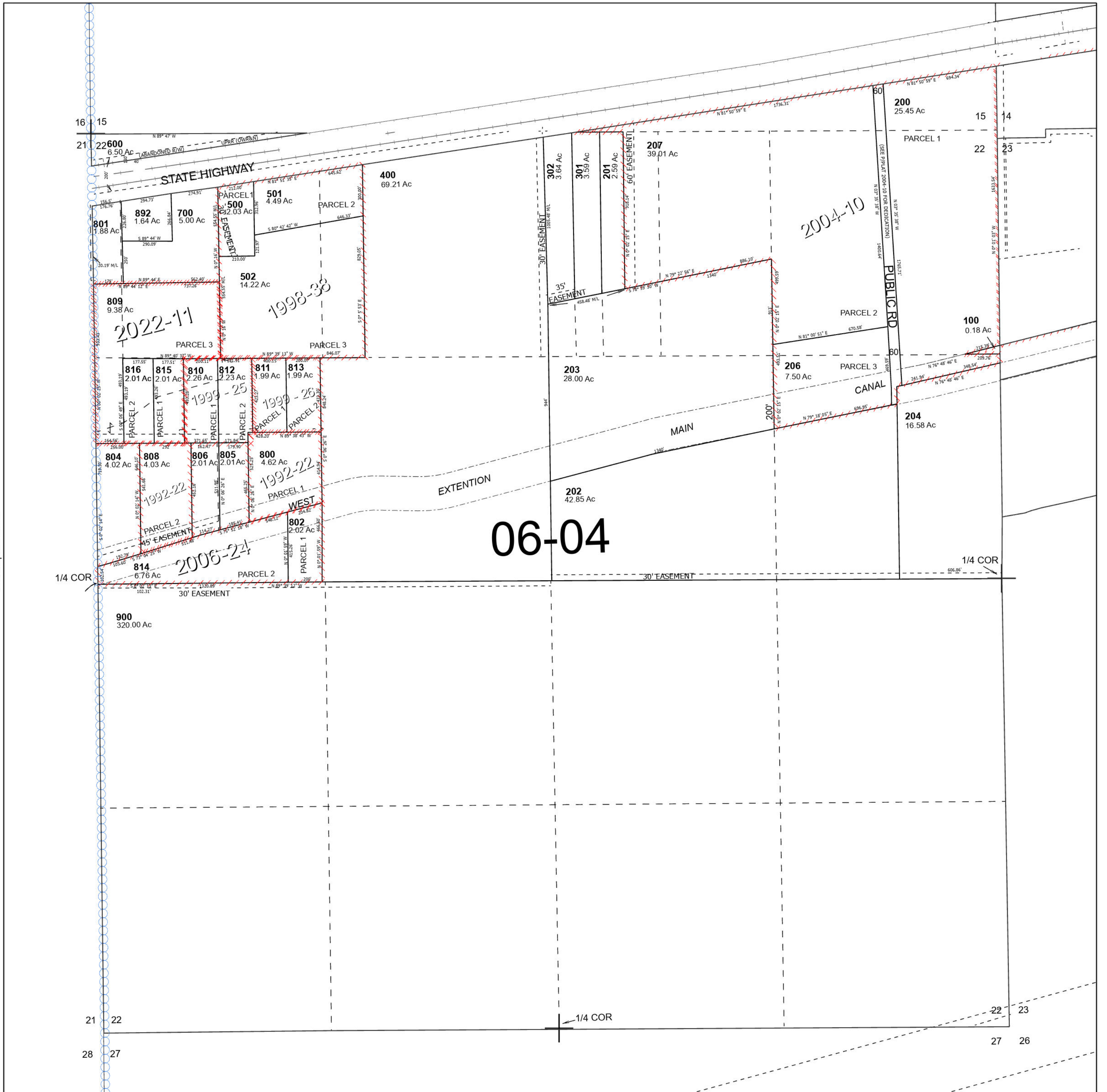
5N 27 22

SCALE 1" = 400'

See Map 5N 27

Cancelled Tax Lots

- 205
- 300
- 303
- 304
- 803
- 807
- 890
- 891



See Map 5N 27 21

See Map 5N 27

Revised 7/3/2023

See Map 5N 27

5N 27 22