

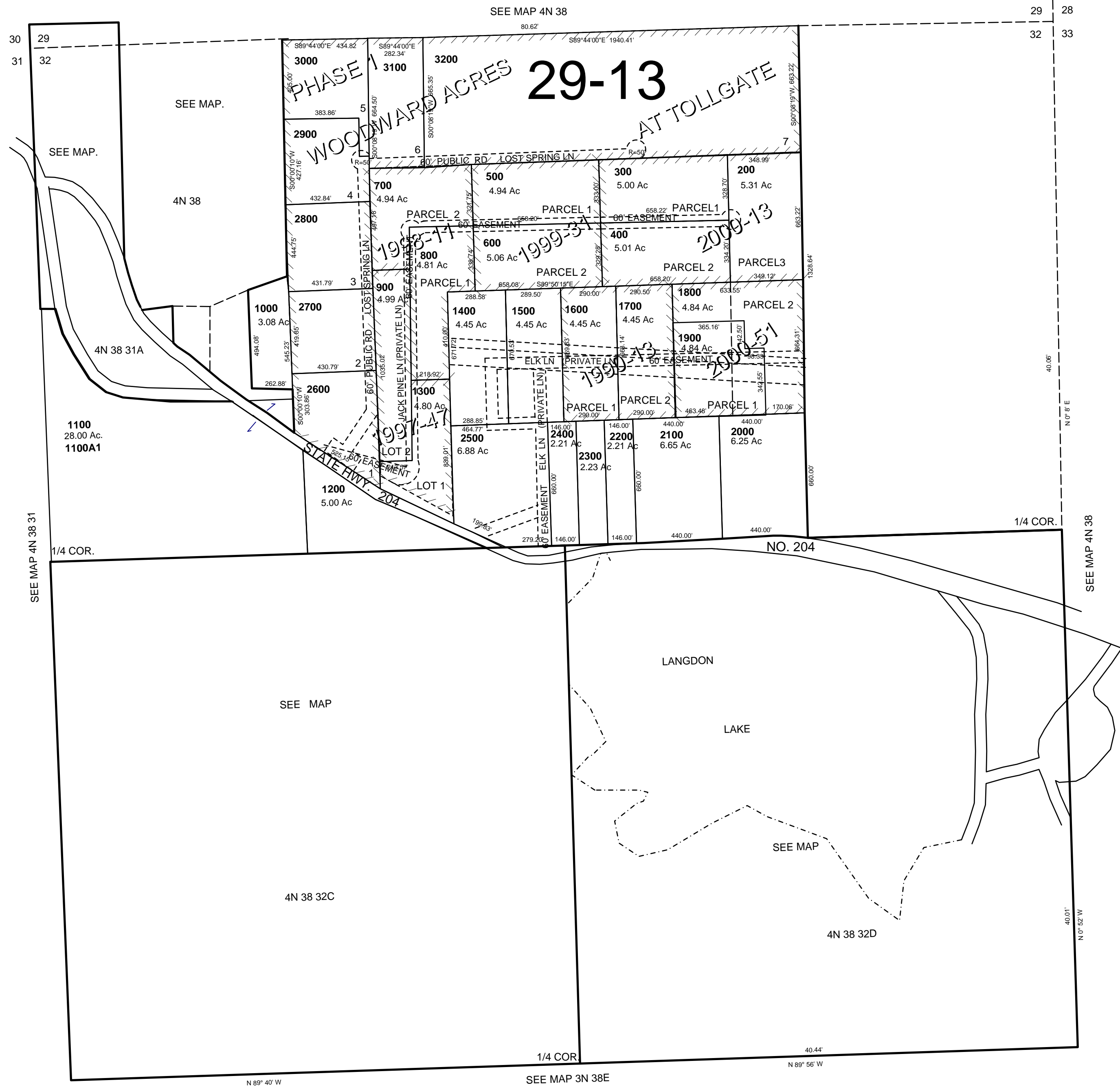
This map was prepared for Assessment & Taxation purposes only and was NOT prepared nor is it suitable for legal, engineering or surveying purposes.

SEC 32 T4N R38E WM  
UMATILLA COUNTY

1"=400"

4N 38 32

AERIAL PHOTO NO 9P-32



REVISED: 07-25-14

4N 38 32