

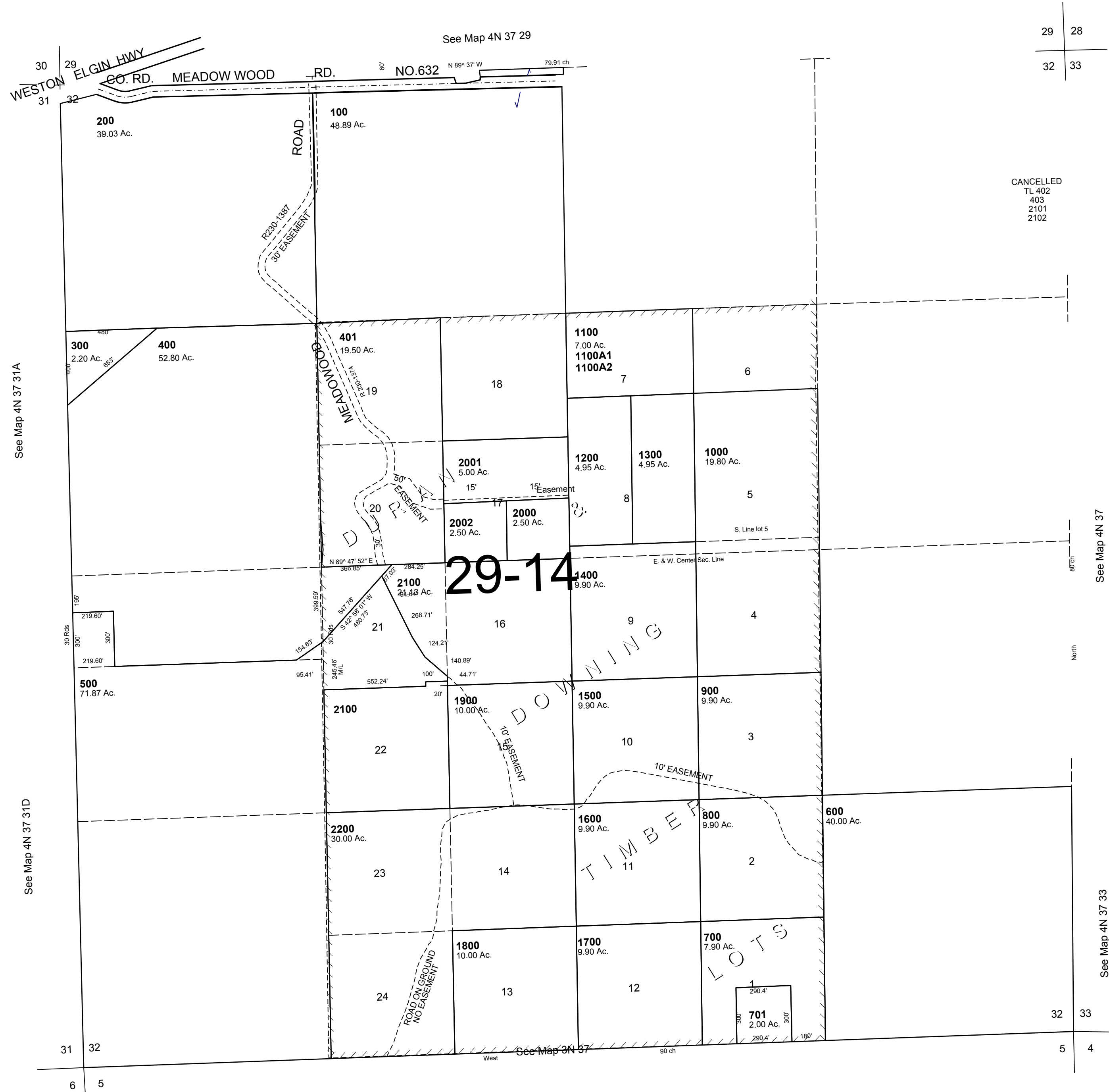
This map was prepared for Assessment & Taxation purposes only and was NOT prepared nor is it suitable for legal, engineering or surveying purposes.

# SEC 32 T4N R37E WM UMATILLA COUNTY

4N 37 32

AERIAL PHOTO NO. 9P-38 & 39

SCALE 1"=400'



Revised: 04-10-17

4N 37 32