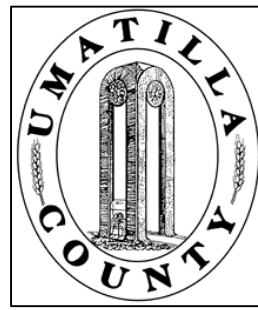


This map was prepared for Assessment and Taxation purposes only and has NOT been prepared for legal, engineering or surveying purposes.



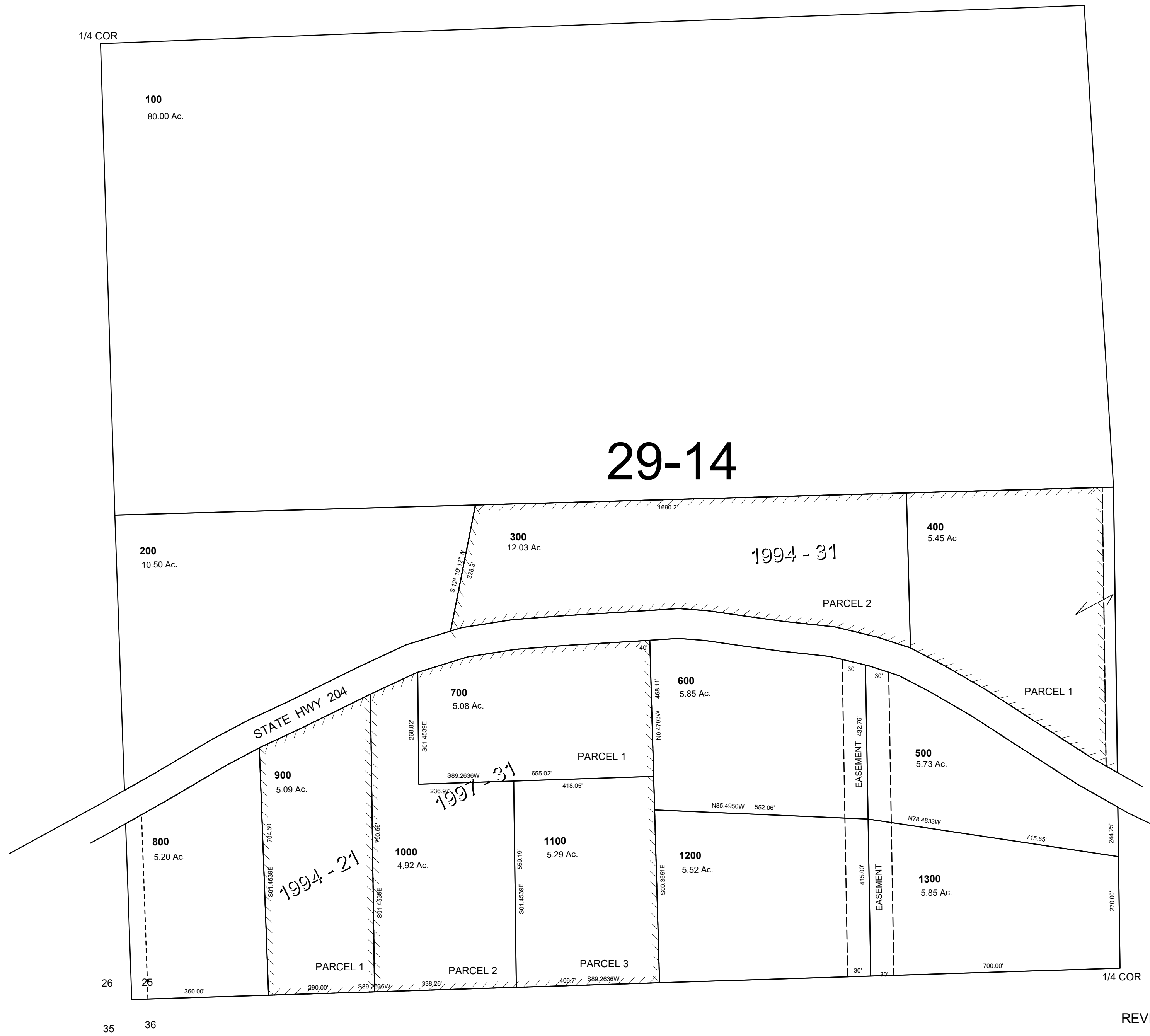
SW1/4 SEC 25 T 4N R 36 E WM

UMATILLA COUNTY, OR

SCALE: 1" = 200'

4N 36 25C

AERIAL PHOTO NO. 5P 68-70 & 90-94



REVISED: 05-26-2020

4N 36 25C