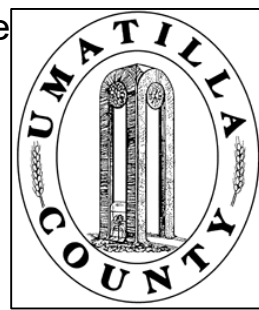


This map was prepared for Assessment & Taxation purposes only and was NOT prepared nor is it suitable for legal, engineering or surveying purposes.



NE1/4 SW1/4 SEC 19 T 4N R 35E WM

UMATILLA COUNTY

SCALE: 1" = 100'

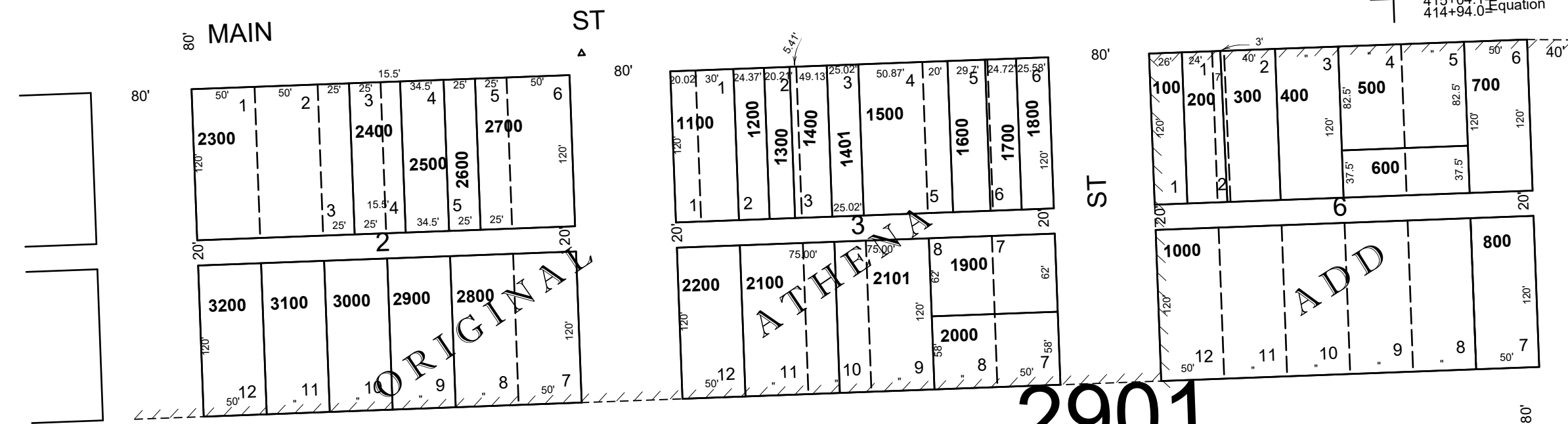
4N3519CA

AERIAL PHOTO NO. 5P-100

See Map 4N 35 19BD

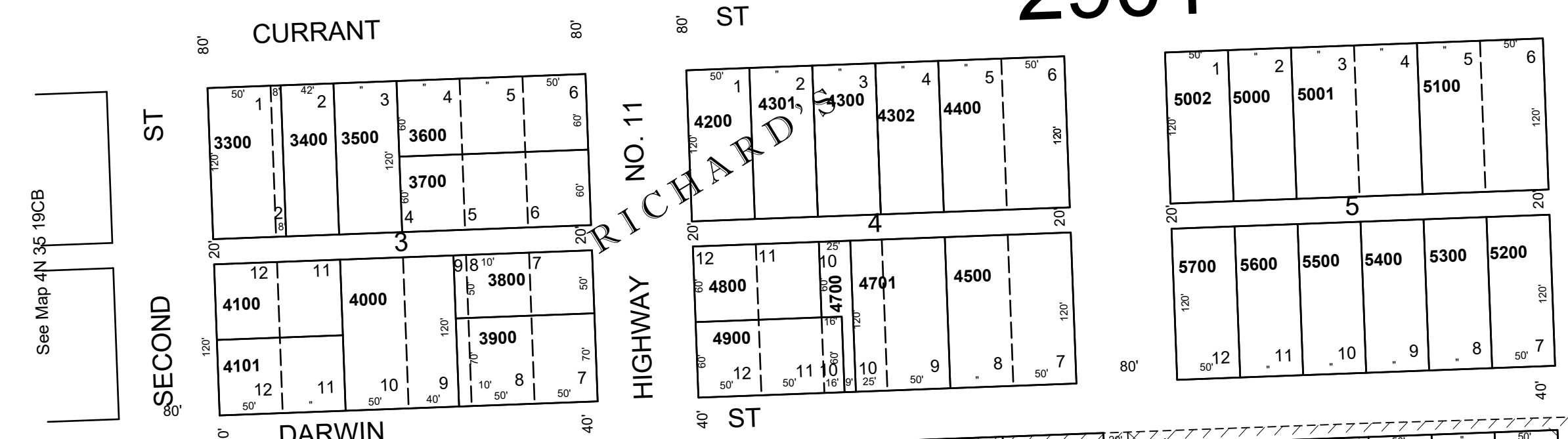
1/16 Cor.

△=0° 08' LT.
Sta. 414+94.0
Equation



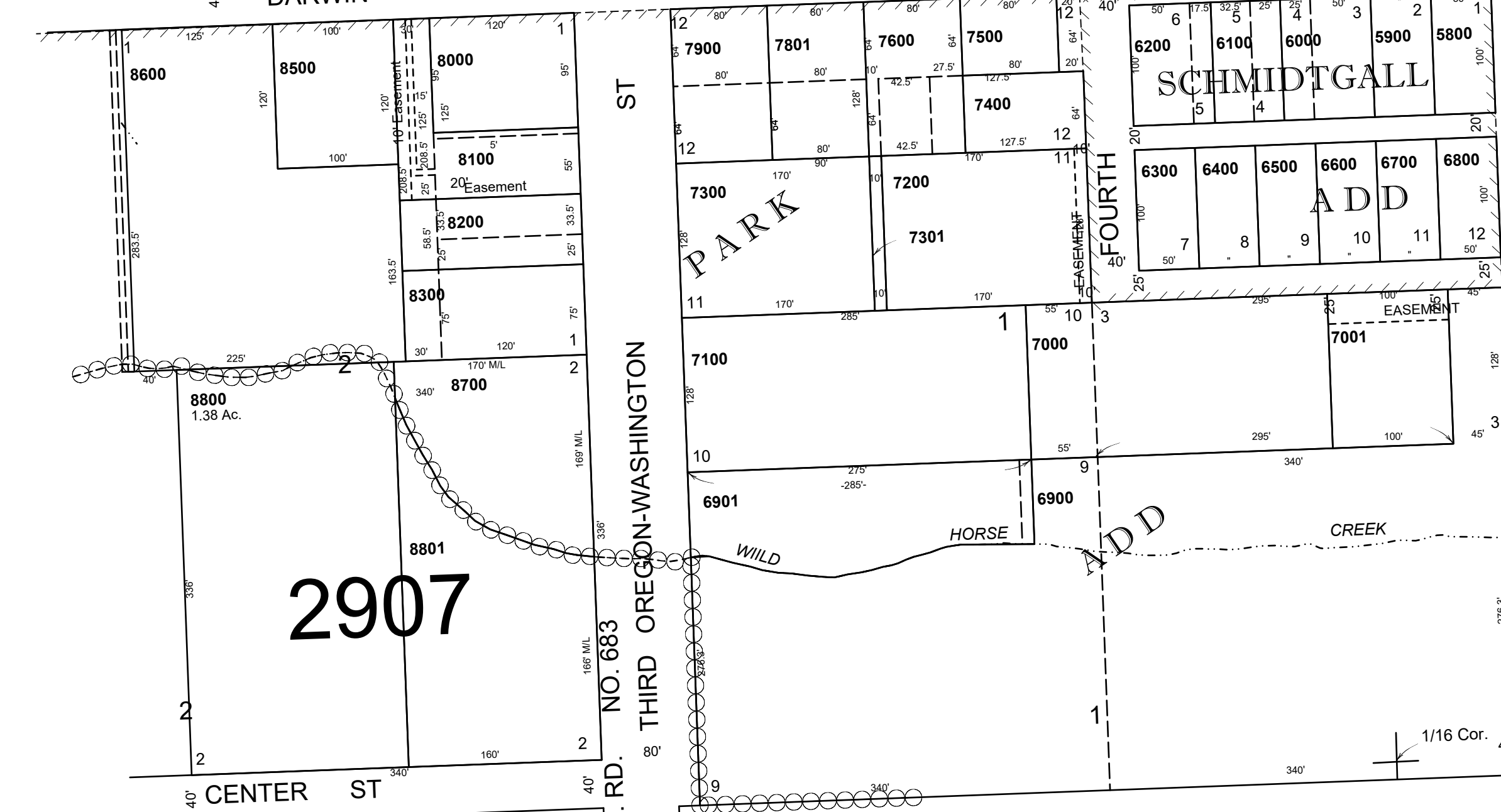
CANCELLED NOS
7701
4600
7700
8401
8400
7800

2901



See Map 4N 35 19CB

See Map 4N 35



2907

1/16 Cor.

1/16 Cor.

REVISED: 09-13-2021

4N3519CA