

This map was prepared for Assessment & Taxation purposes only and was NOT prepared nor is it suitable for legal, engineering or surveying purposes.

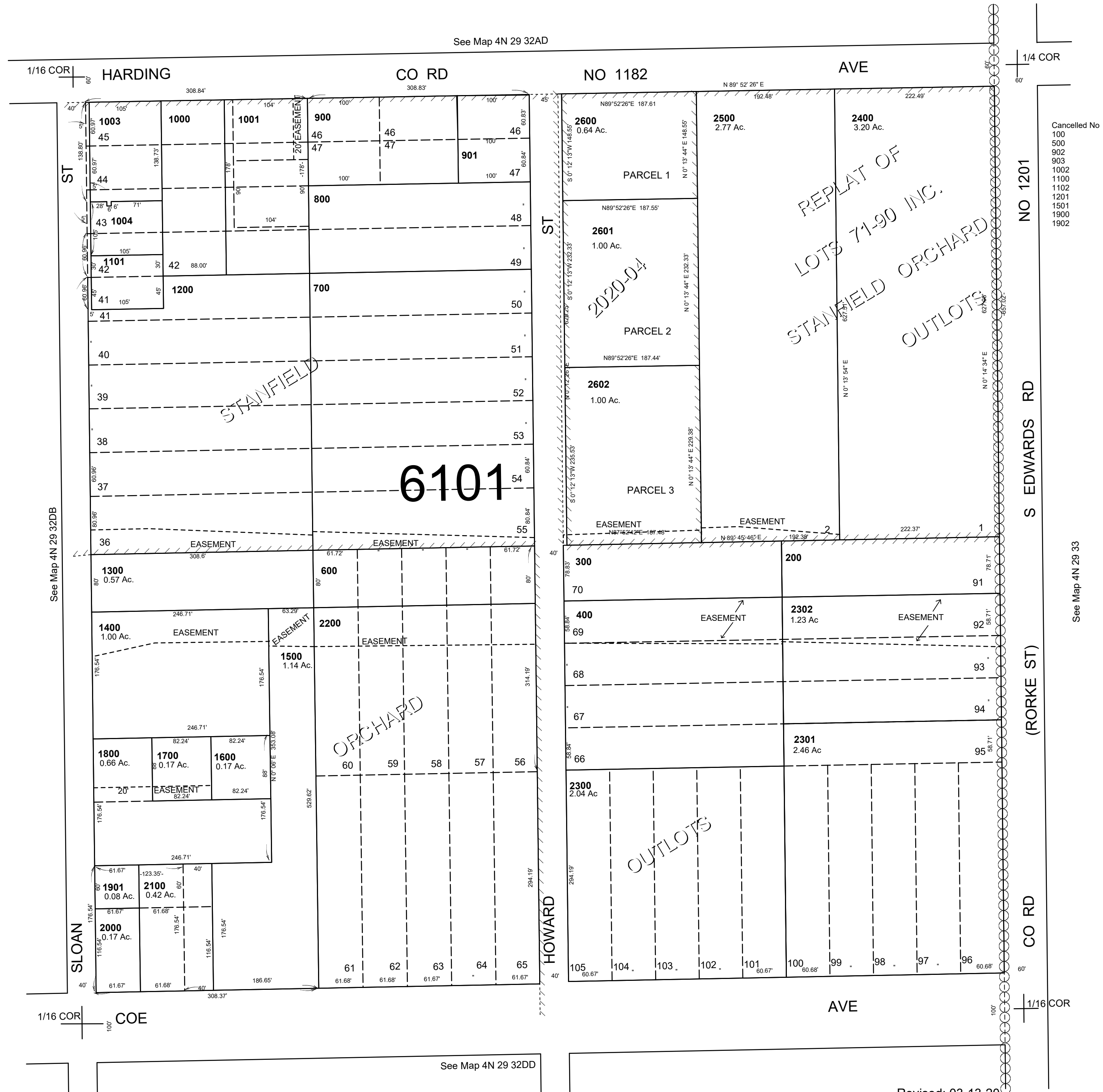
NE1/4 SE1/4 T4N R29E WM UMATILLA COUNTY

1"=100'

4N 29 32DA

AERIAL PHOTO NO. NZ 2P-44

See Map 4N 29 32AD



Cancelled No
100
500
900
902
903
1002
1100
1102
1201
1501
1900
1902

See Map 4N 29 33

Revised: 03-13-20

4N 29 32DA