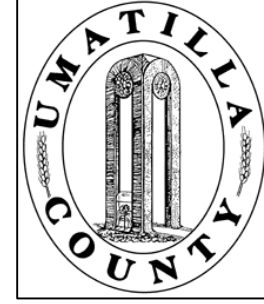


This map was prepared for Assessment & Taxation purposes only and was NOT prepared nor is it suitable for legal, engineering or surveying purposes.

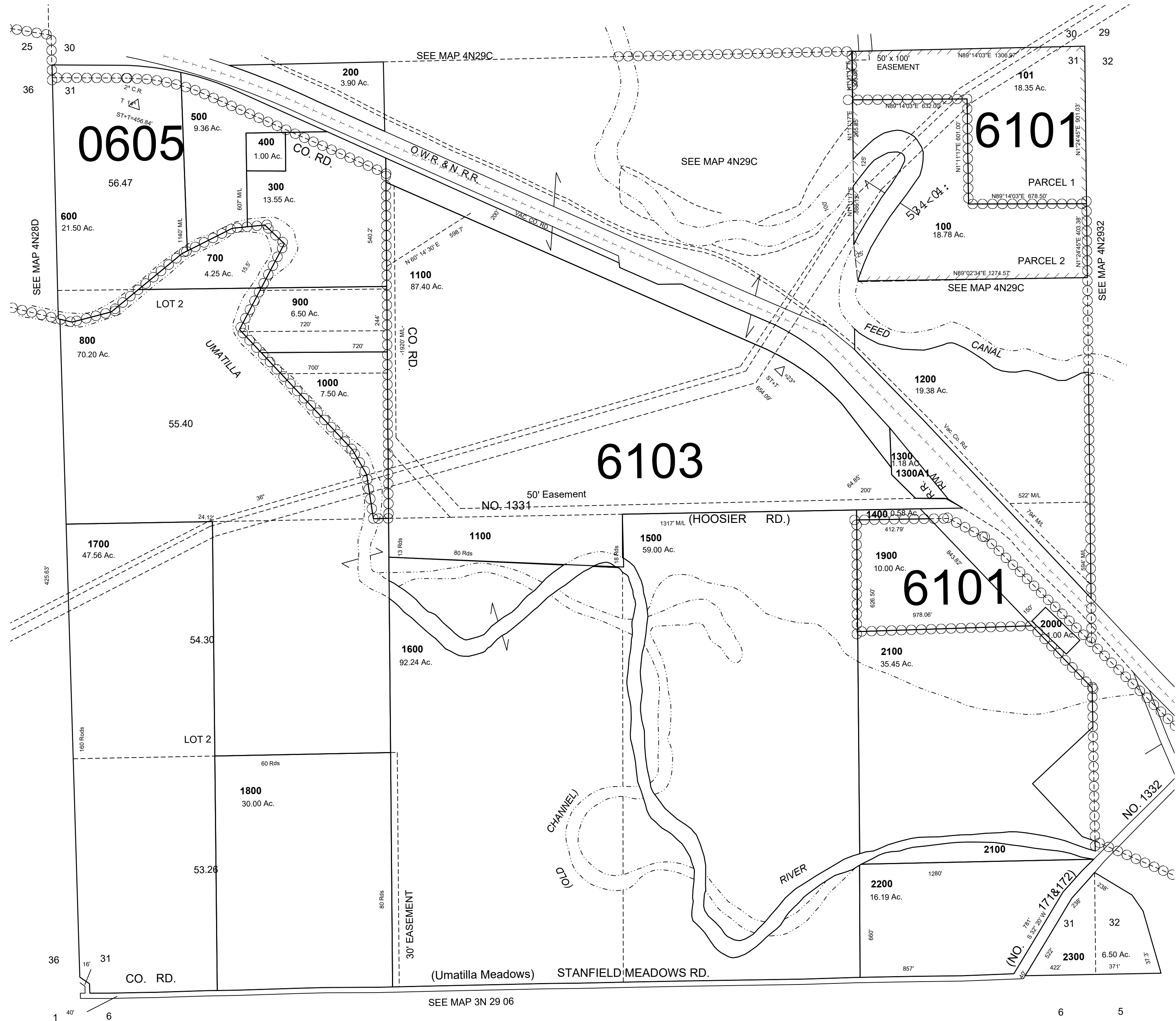


# SEC 31 T4N R29E WM UMATILLA COUNTY

SCALE: 1" = 400'

## 4N 29 31

AERIAL PHOTO NO. NZ-2P 18-20 & 43-46



Revised: 09-13-2021

## 4N 29 31