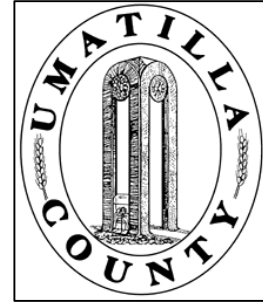


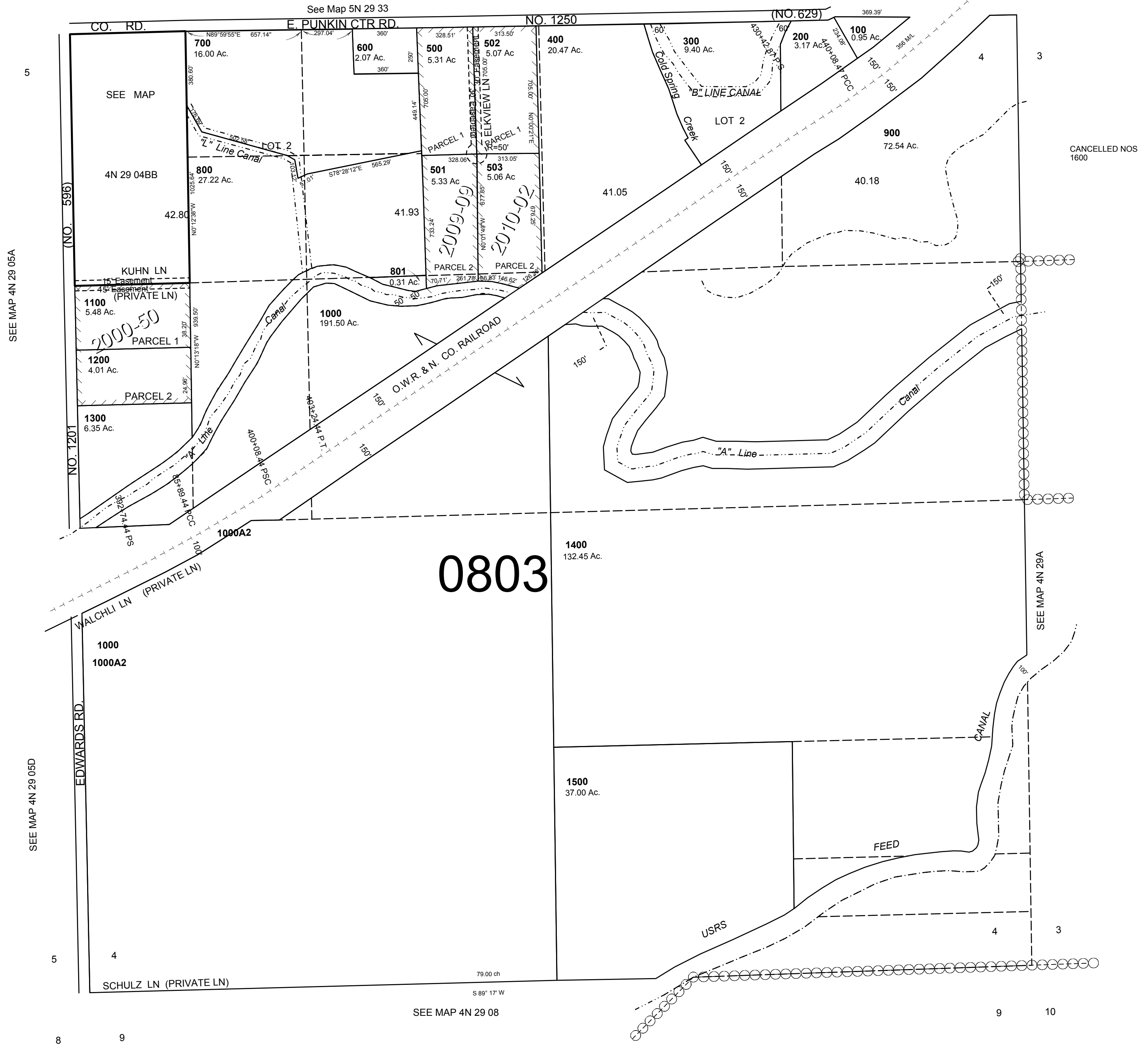
This map was prepared for Assessment & Taxation purposes only and was NOT prepared nor is it suitable for legal, engineering or surveying purposes.



SEC 4 T4N R29E WM
UMATILLA COUNTY
SCALE: 1" = 400'

4N 29 04

AERIAL PHOTO NO. NZ-2P 18-20 & 1P 124-126



Revised: 01-18-18

4N 29 04