

This map was prepared for Assessment & Taxation purposes only and was NOT prepared nor is it suitable for legal, engineering or surveying purposes.

Cancelled Tax Lots

300	2800
400	2900
900	2901
1000	3000
1100	
1101	
2400	
2500	
2600	
2700	

# NW 1/4 NW 1/4 SEC 24 T4N R28E WM

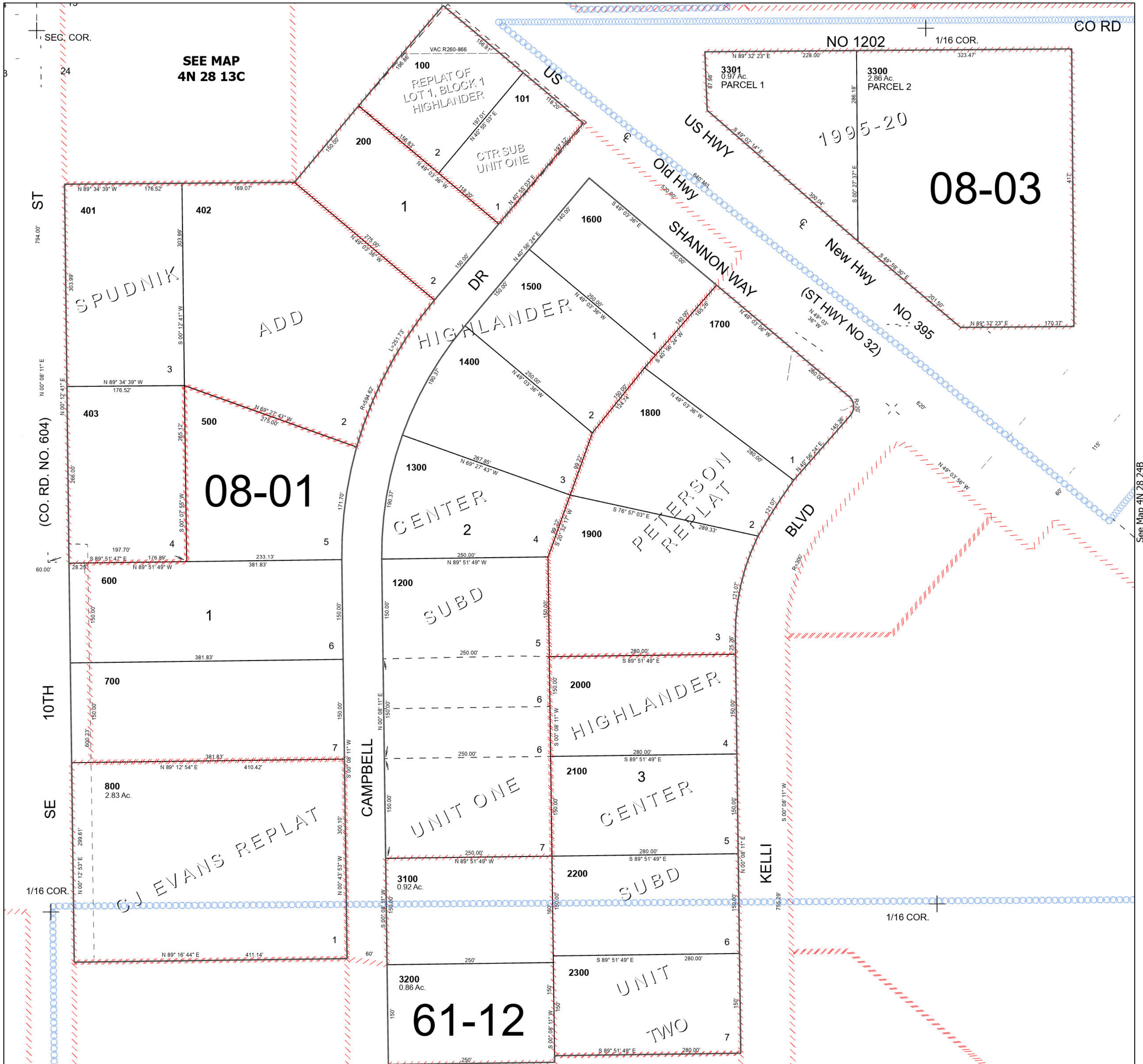
## UMATILLA COUNTY

SCALE 1" = 100'

Hermiston

### 4N 28 24BB

See Map 4N 28 13C



See Map 4N 28 23

See Map 4N 28 24B

Revised 3/29/2024

See Map 4N 28 24B

### 4N 28 24BB