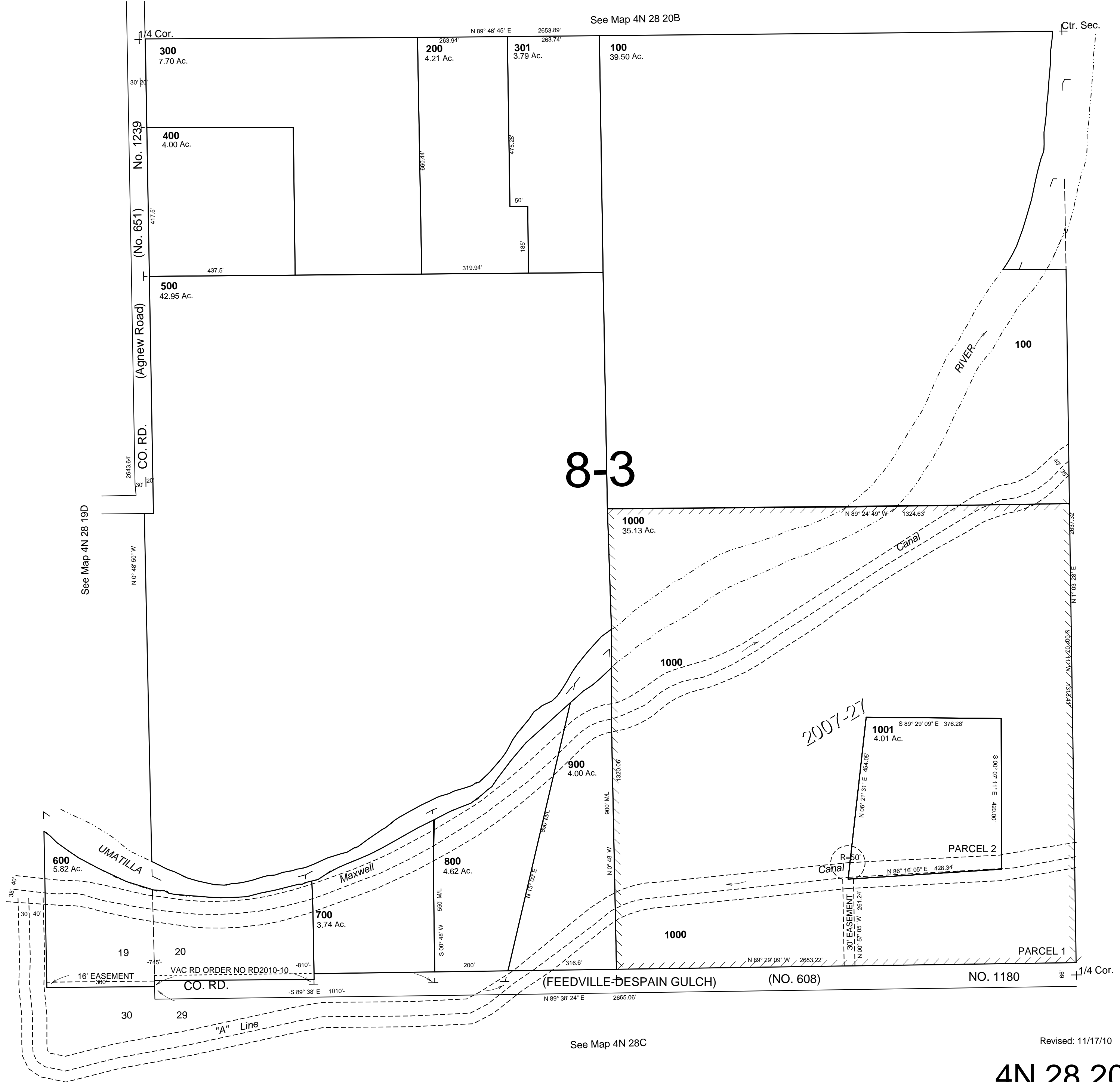


This map was prepared for Assessment & Taxation purposes only and was NOT prepared nor is it suitable for legal, engineering or surveying purposes.

SW 1/4 SEC 20 T4N R28E WM UMATILLA COUNTY

4N 28 20C

SCALE 1"=200'



8-3

2007-21

Revised: 11/17/10

4N 28 20C