

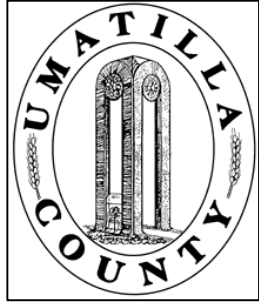
This map was prepared for Assessment & Taxation purposes only and was NOT prepared nor is it suitable for legal, engineering or surveying purposes.

# NE1/4 NW1/4 SEC 16 T4N R28E WM

SCALE: 1" = 100'

## 4N2816BA

# UMATILLA COUNTY

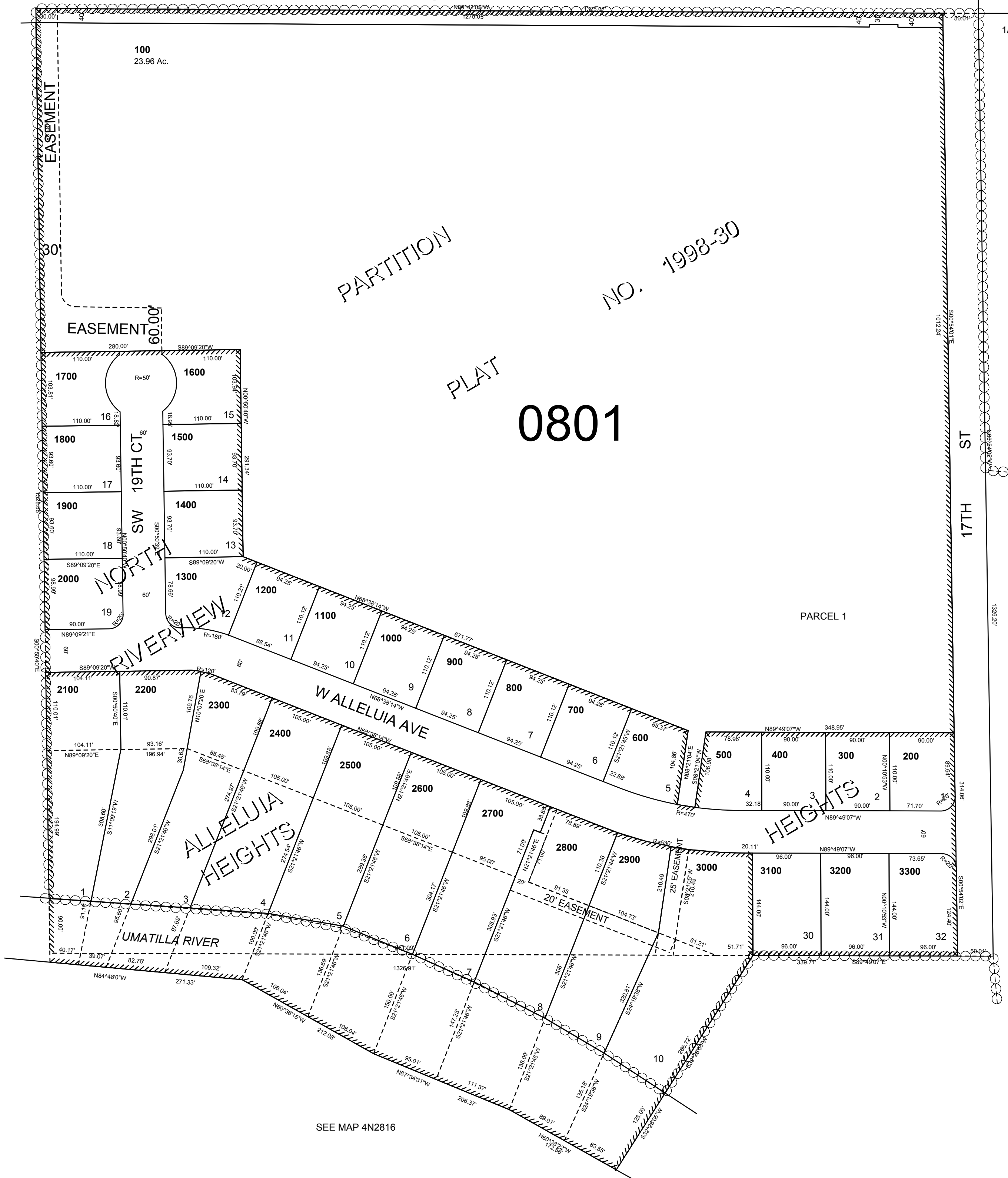


SEE MAP 4N2809CD

HIGHLAND RD

1/4 COR.  
ALLELUIA HEIGHT  
NORTH RIVERVIEW HEIGHT:  
CANCELLED NOS  
300

SEE MAP 4N2816



SEE MAP 4N28 16AB

17TH ST

SEE MAP 4N2816

REVISED: 03-28-18

## 4N2816BA