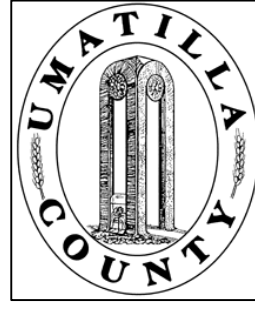


This map was prepared for Assessment & Taxation purposes only and was NOT prepared nor is it suitable for legal, engineering or surveying purposes.

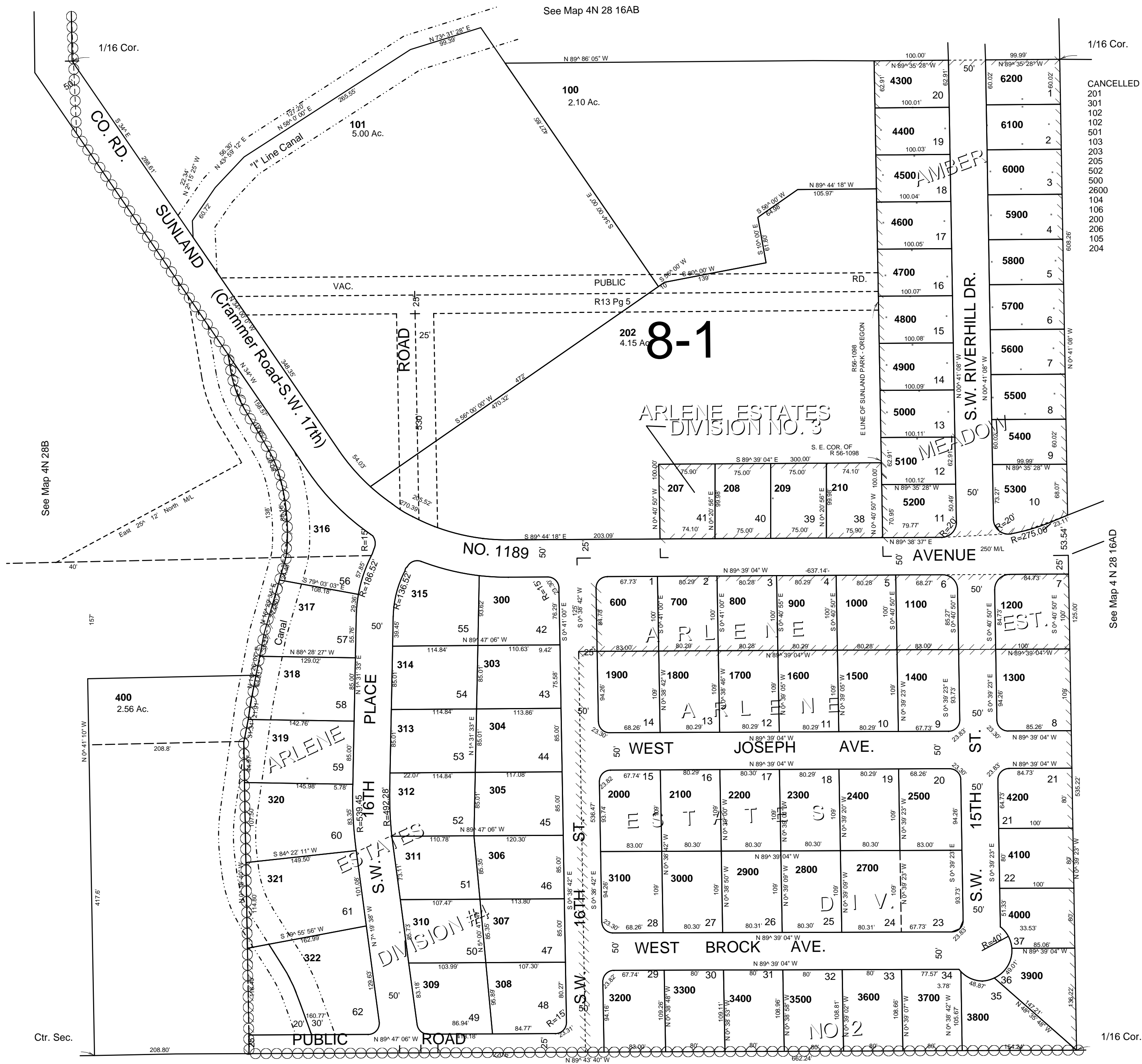


SW1/4 NE1/4 SEC 16 T 4 N R28 E WM UMATILLA COUNTY

4N2816AC

SCALE: 1" = 100'

Amber Meadow Arlene Est. Div.
Arlene Est. Div. No 2
Arlene Est. Div. No 3
Arlene Est. Div. No 4
Aerial Photo No. NZ-2P-25



See Map 4N 28 16D

4N2816AC

7/17/03