

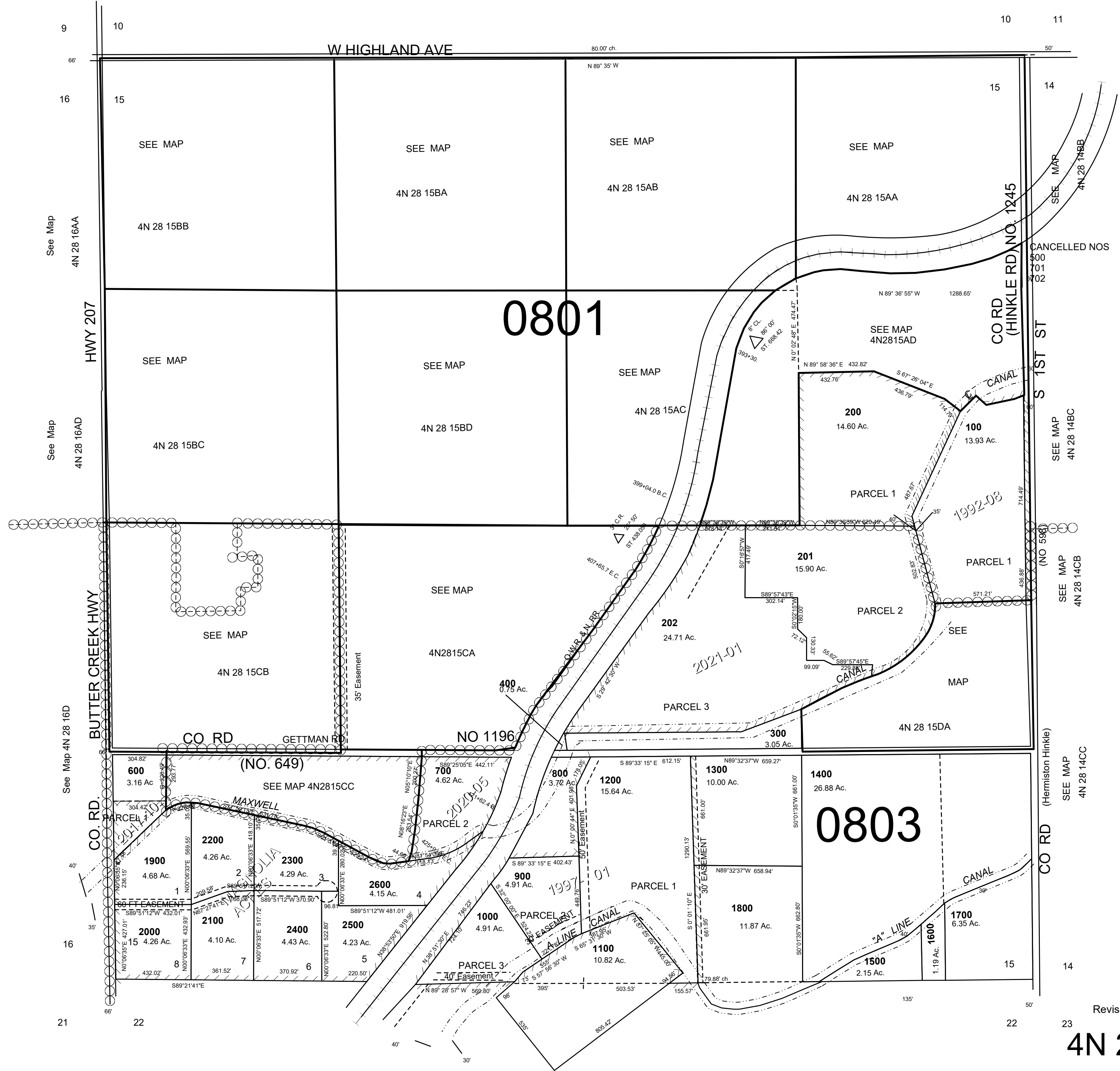
This map was prepared for Assessment & Taxation purposes only and was NOT prepared nor is it suitable for legal, engineering or surveying purposes.

SEC 15 T4N R28E WM UMATILLA COUNTY

4N 28 15

AERIAL PHOTO NO 1P-123 & 2P-23

SCALE: 1" = 400'



Revised:03-19-2021

4N 28 15