

This map was prepared for assessment purposes

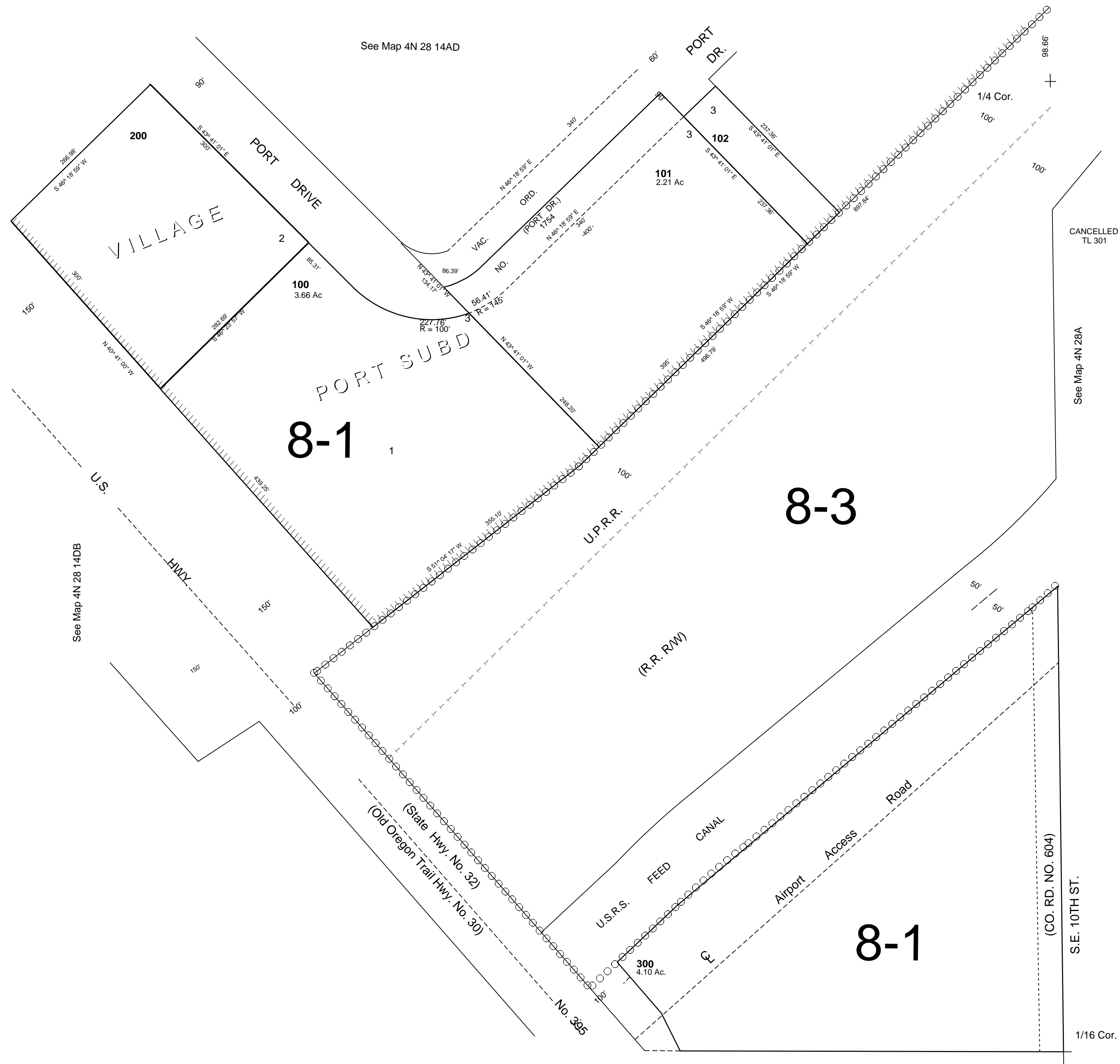
SCALE 1"=100'

# NE1/4 SE1/4 SEC 14 T4N R28E WM UMATILLA COUNTY

2/6/06

## 4N 28 14DA

AERIAL PHOTO NO. NZ IP-123



See Map 4N 28 14AD

CANCELLED TL 301

See Map 4N 28A

See Map 4N 28 14DB

See Map 4N 28 A

## 4N 28 14DA