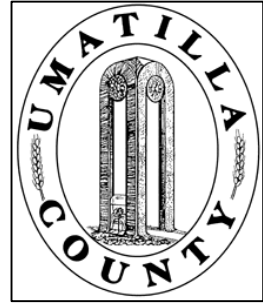


This map was prepared for Assessment & Taxation purposes only and was NOT prepared for nor it is suitable for legal, engineering or surveying purposes.



NE1/4 NW1/4 SEC 14 T4N R28E WM  
UMATILLA COUNTY

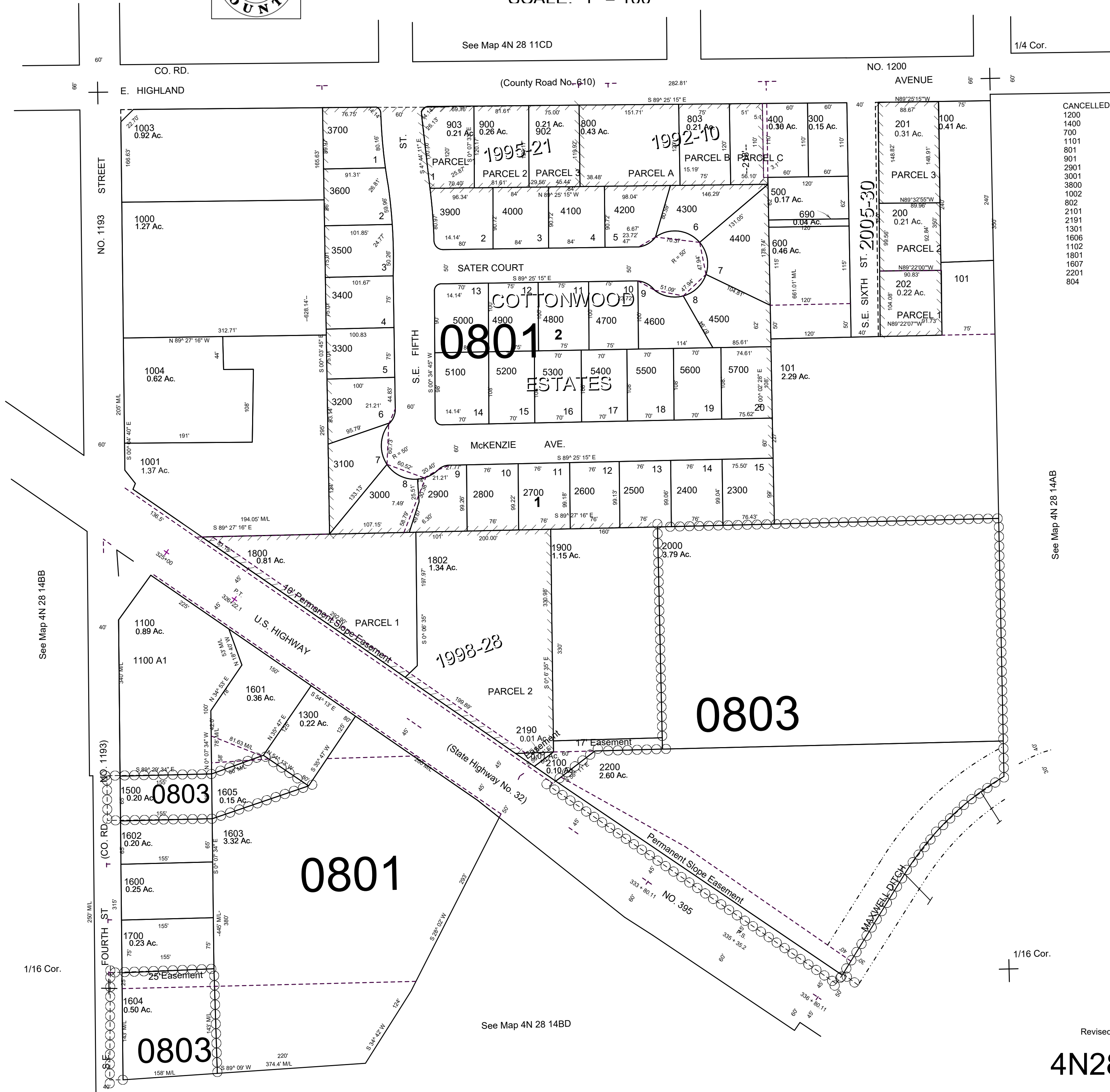
4N2814BA

AERIAL PHOTO NO NZ-1P-123

SCALE: 1" = 100'

See Map 4N 28 11CD

1/4 Cor.



CANCELLED  
1200  
1400  
700  
1101  
801  
901  
2901  
3001  
3800  
1002  
802  
2101  
2191  
1301  
1606  
1102  
1801  
1807  
2201  
804

See Map 4N 28 14AB

See Map 4N 28 14BB

1/16 Cor.

See Map 4N 28 14BD

1/16 Cor.

Revised: 12-17-19

4N2814BA